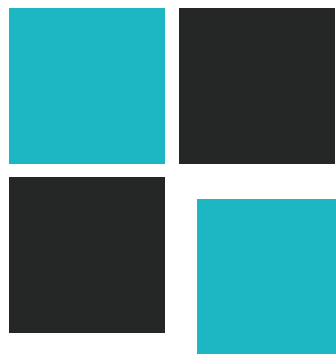


# cornerstone

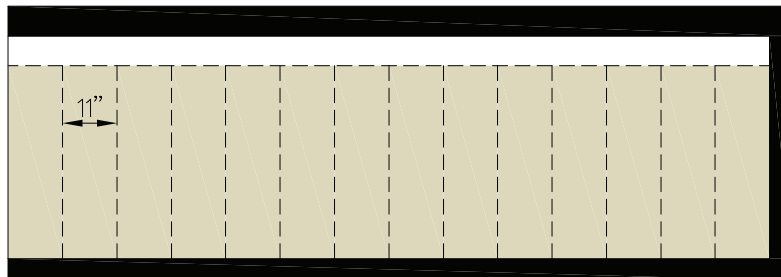


double sections



Scan on your Mobile Device  
to get your Digital Brochure

## Basement Stairwell Designs



INTERIOR WALL



[www.modulinepenticton.ca](http://www.modulinepenticton.ca)

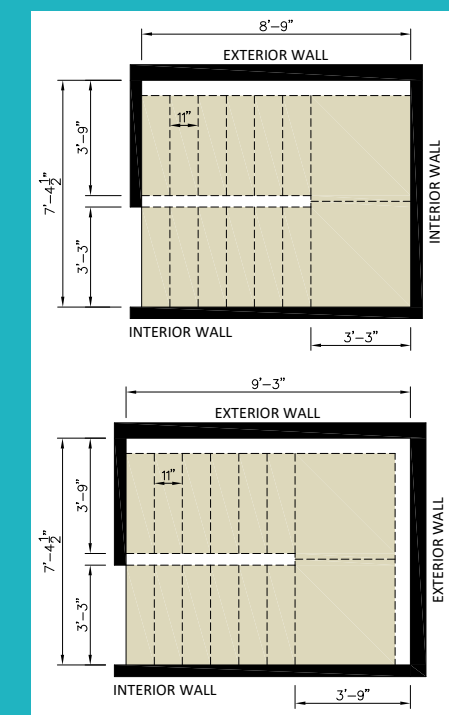
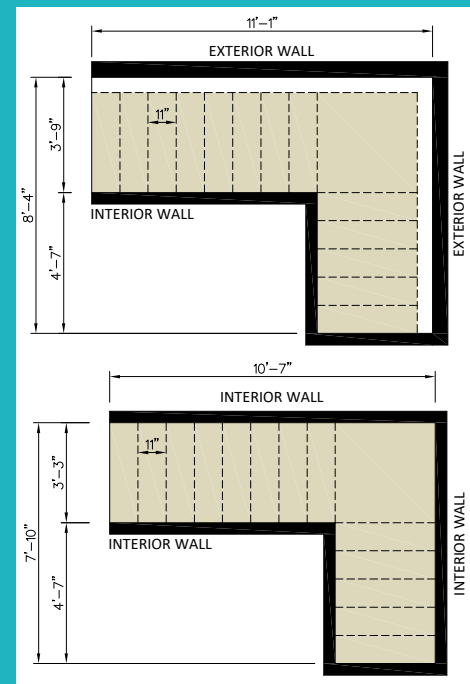
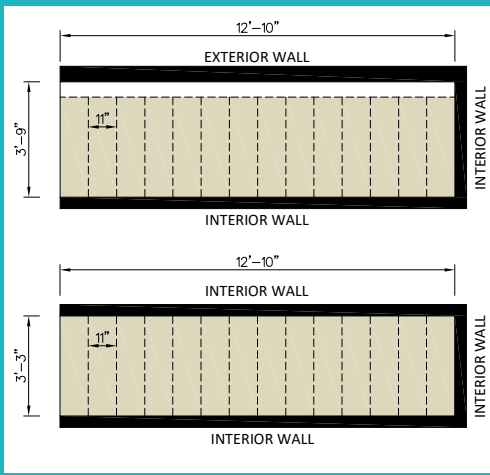
## EXAMPLES OF TYPICAL STAIRWELL LAYOUTS

Most multi-section plans can accommodate stairwells with little change to the floorplan.

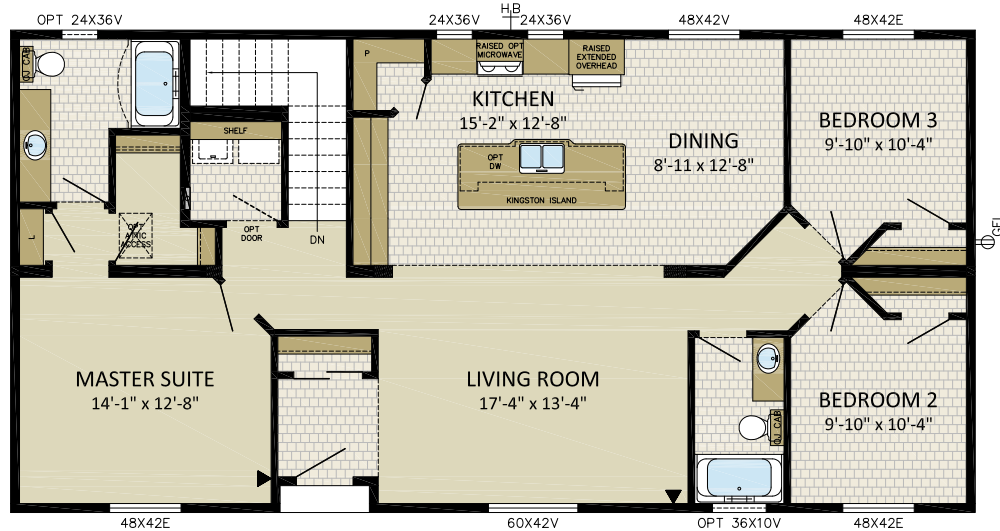
These are just some examples of plans with a basement option, see our brochure for full list of available floorplans.



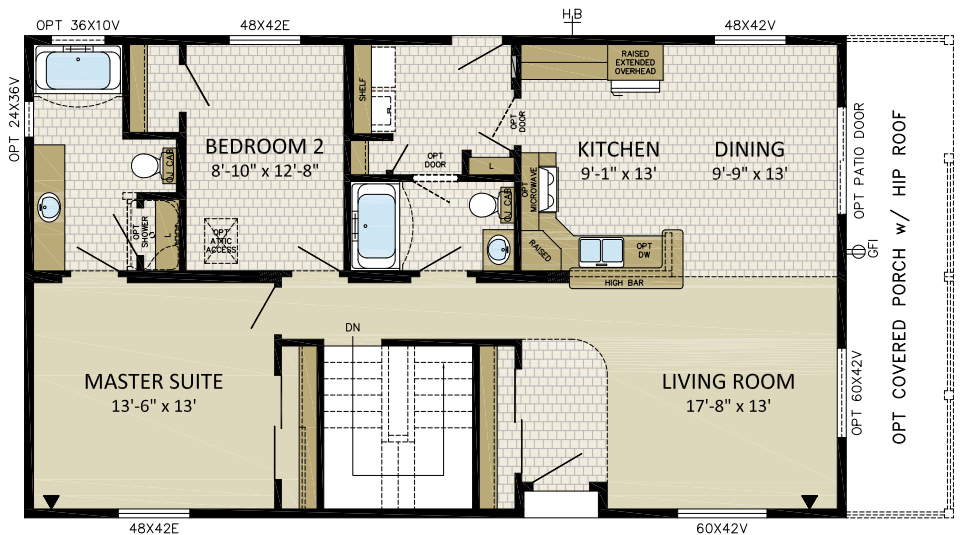
Scan on your Mobile Device to get your Digital Brochure



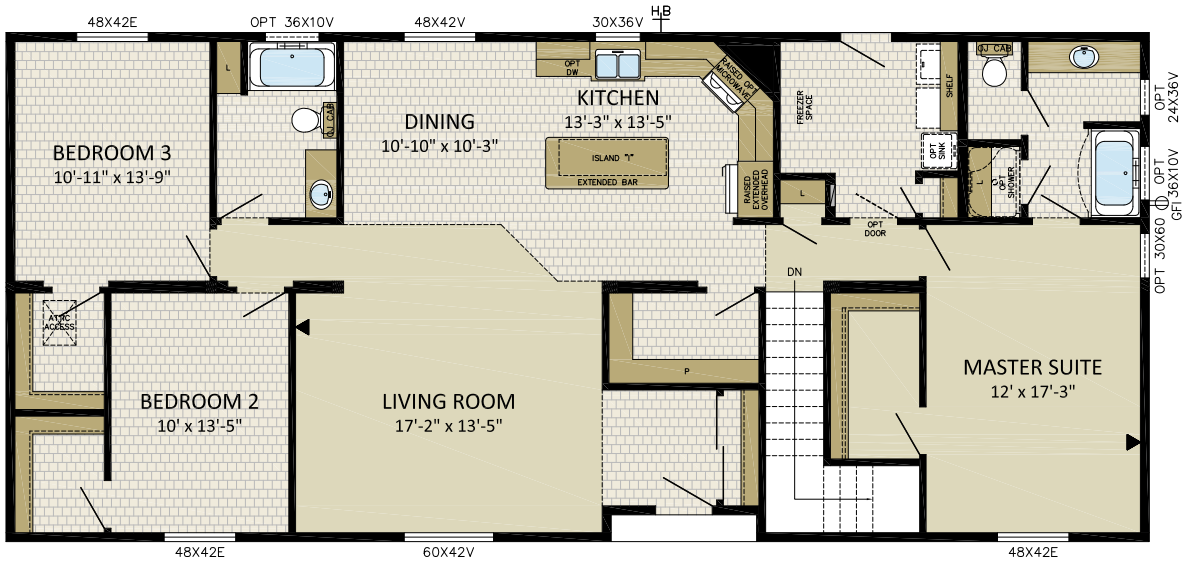
### Suggested Layout for: MILAN - 27CO5402



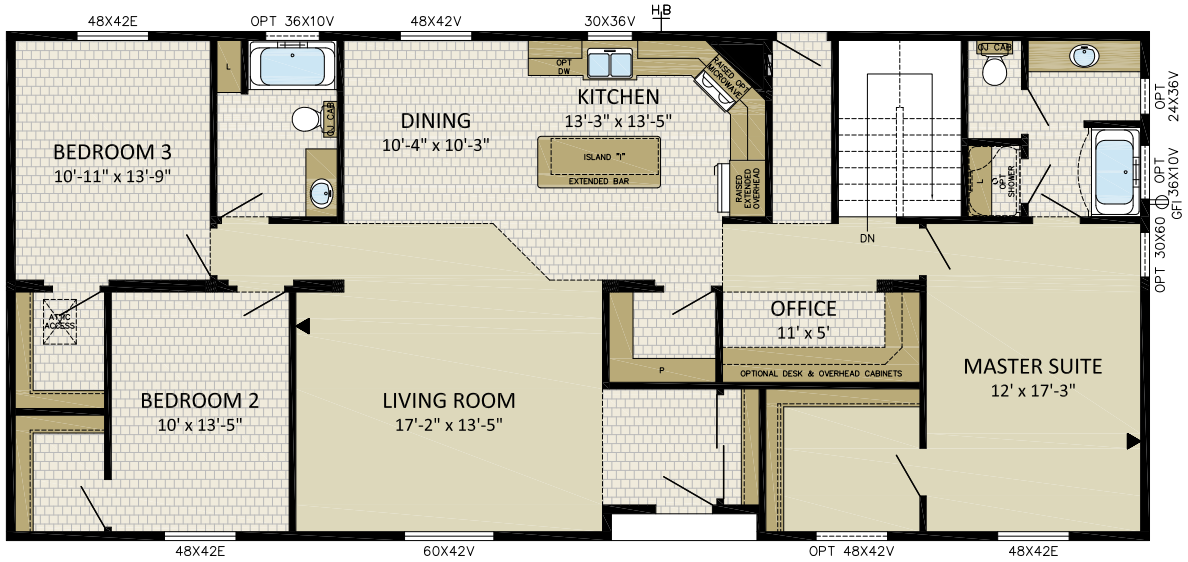
### Suggested Layout for: MORGAN - 27CO4601



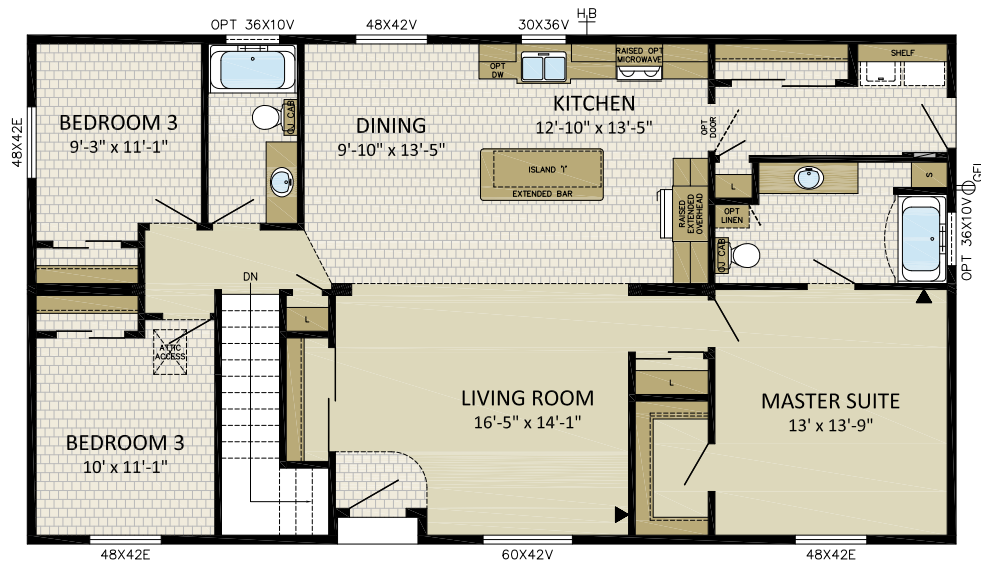
Option 1 Layout for:  
**HARRISON - 286CO6402**



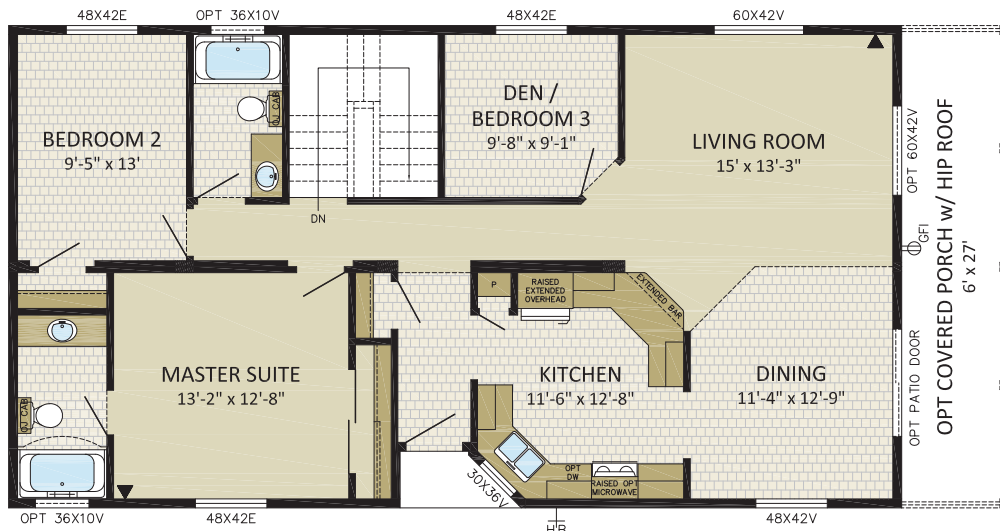
Option 2 Layout for:  
**HARRISON - 286CO6402**



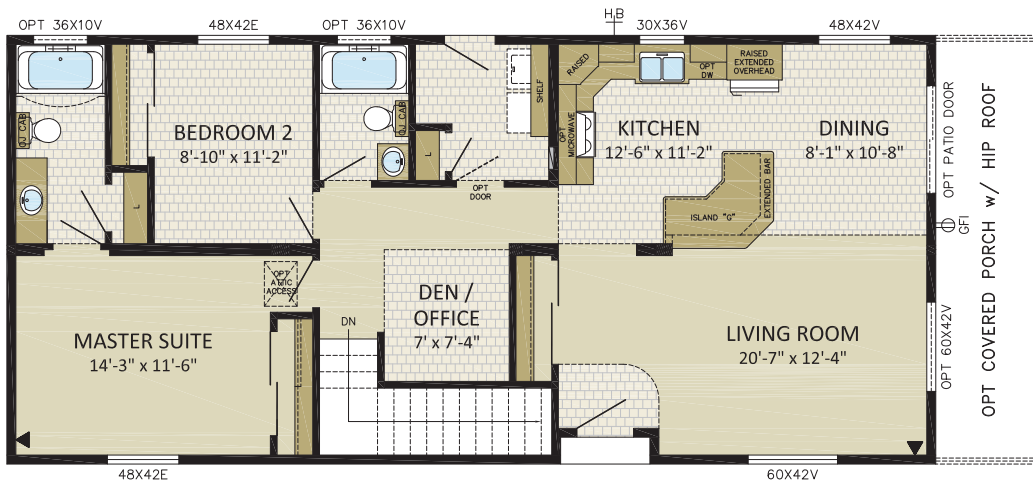
Suggested Layout for:  
**HAYWARD - 286CO5201**



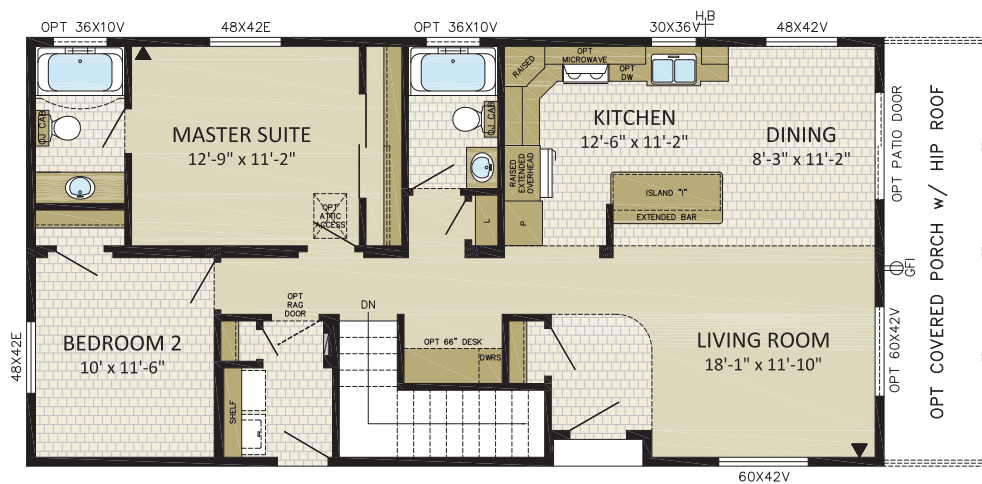
Suggested Layout for:  
**McARTHUR - 27CO5001**



Suggested Layout for:  
**COTTONWOOD - 24CO5202**



Suggested Layout for:  
**CLINTON - 24CO4801**



**DISCLAIMER:**

Due to continuous product development and improvement, prices, specifications, and materials are subject to change without notice or obligation. Square footage and other dimensions are approximate. Included images are artist renderings and are not intended to be an accurate representation of the home. Renderings and floorplans may be shown with optional features or third-party additions.