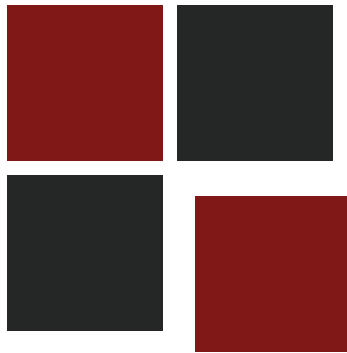


cornerstone

single sections



18' and 20' Wide Homes



Scan on your Mobile Device
to get your Digital Brochure



www.modulinepenticton.ca

Cornerstone Single Sections

Standard Features and Specifications

GENERAL CONSTRUCTION	
Built to Code	CSA Z-240 Zone 4,5
Snow load	94psf/4.53kpa GSL 52psf/2.49kpa Design Load
Insulation	Ceiling: R40 Walls: R22 Floor: R33
Floor Joist	18 Wide 2X12 19-8 Wide 2X12
Decking	5/8" T&G OSB
Roof Pitch	18 Wide 3/12 19-8 Wide 2.5/12
Roofing	Architectural Shingle
Eaves	18 Wide 16" 19-8 Wide 16"
	Front 16" Side 12" Fixed Rear 16" 12" Pull Out
Exterior Walls	8' 2x6
Interior Walls	2x4 Vinyl Covered Drywall Panel
Ceiling	Textured Drywall Flat
Siding	Maintenance Free Vinyl Lap
Fascia	White 8" Smart Trim
Front End	Eyebrow
Windows	Double Low E, Argon, PVC w/Vinyl sills Screens & Security Locks Cordless Cellular Shades <small>(excludes obscured & transoms)</small>
Doors	2 Panel Insulated with Dead Bolt. Peep hole at Front 36" Front 32" Rear Decorative Coach Light at all entrances <small>(exc porch)</small>

SPACIOUS BATHS	
Ceramic Tile Backsplash	
Vanity Mirror with Bar Light	
One-Piece Fiberglass Tub/Shower with Single Lever Faucet	
Power Bath Fan on Separate Switch	
GFI Receptacle	
Comfort Height, Dual Flush Toilet	
Wall Mounted Over John Cabinet	
Curved Shower Rod & Curtain (Select Plans)	

2023.2 Spec

UTILITY SERVICES	
Electrical Service	100 AMP
Heating	96% High Efficiency 2 stage Gas Furnace, A/C Ready
Water Heater	40 Gallon Electric
Communication Outlets	(1) Primary Bdrm, (1) Living Room
Smoke & CO2 Detectors per code	
Wired, Plumbed & Vented for Washer & Dryer	
Continuous Whole House Fan	
Shut Off Valves at all Sinks	
Exterior Frost Free Tap	
Exterior GFI Electrical Outlet	
Freezer Outlet <small>(Plan Specific)</small>	
Heat Tape Plug	

TASTEFUL INTERIORS	
Flooring	Carpet: Primary Bedroom, Living Room Quality Cushioned Linoleum: All other areas
Designer Glass Light Fixtures	
Prefinished Interior Doors	
Single Rod with Shoe Shelf in Primary Bedroom Closet	
Linen Closet <small>(plan specific)</small>	
Utility Room Shelf	

BRIGHT, BEAUTIFUL KITCHENS	
European Deluxe Cabinetry with Crown Moulding	
Walk- In Pantry <small>(Plan Specific)</small>	
Kitchen Island <small>(Plan Specific)</small>	
Raised & Extended Fridge Cabinet	
Ceramic Tile Backsplash	
Double Stainless Steel Kitchen Sink	
Chrome Single Handle Pull Out Faucet	
Window over Kitchen Sink <small>(plan specific)</small>	
Exterior Vented Range Hood with Light	
Fridge Opening 36"x72"	
18 cu ft, 2 Door Frost Free Refrigerator	
30" Electric Range	

10 Year Warranty



FRONT PAGE

WEDGE ROOF OPTION IS AVAILABLE ON 18' WIDES ONLY.

EARLE

2 BDRM, 2 BATH, FRONT BDRM
18CO5801

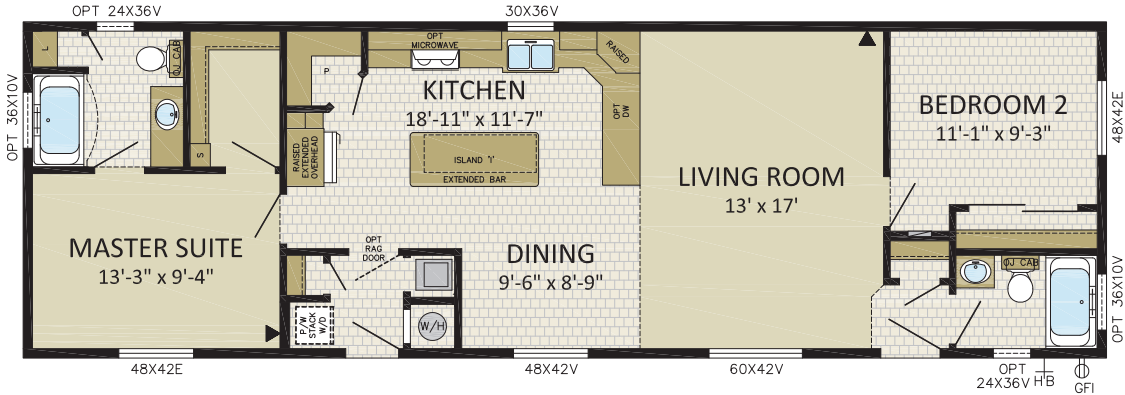
18' x 58' | 1,044 sqft

IMAGE SHOWN WITH OPTIONS:

- 14' DORMER
- LOUISBOURG FRONT DOOR
- 9-LITE REAR DOOR
- 24x36v & 36x10v BATH WINDOWS
- FIBER CEMENT SIDING



18'
WIDES



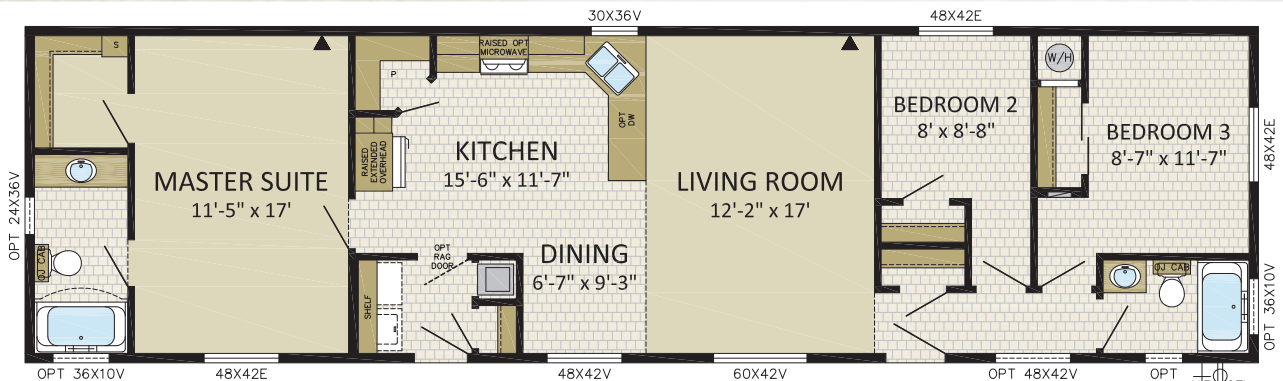
EDGEMONT

3 BDRM, 2 BATH, FRONT BDRM
18CO6601

18' x 66' | 1,188 sqft

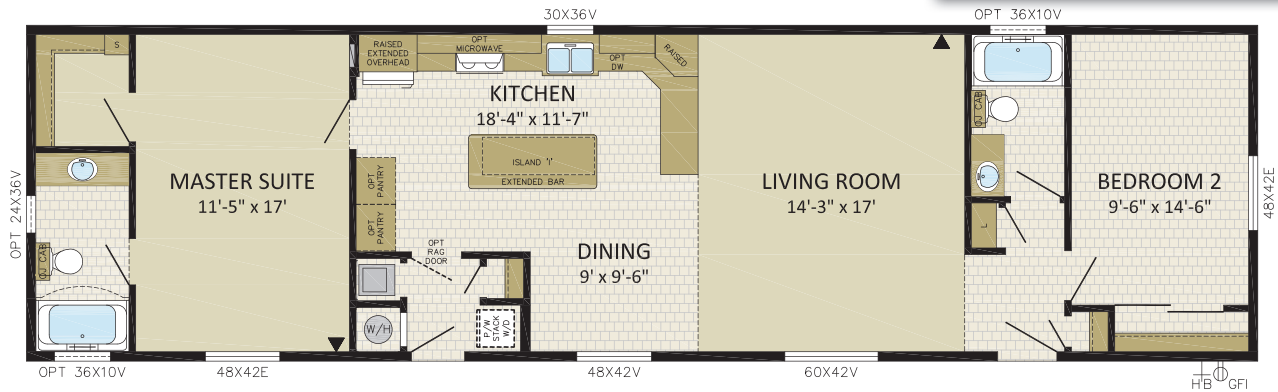
IMAGE SHOWN WITH OPTIONS:

- Hip Roof
- VICTORIA FRONT DOOR
- 9-LITE REAR DOOR
- 24x36v & 36x10v BATH WINDOWS
- Box Bay w/FAUX Stone on Hitch End
- 48x60v WINDOW IN MASTER SUITE, DINING, HALLWAY & BEDROOM 3
- 48x60v WINDOW & (2) 18x60 WINDOWS IN LIVING ROOM
- CARPORT SUPPLIED & INSTALLED ON SITE BY OTHERS





ELDORADO
 2 BDRM, 2 BATH, FRONT BDRM
18CO6602
 18' x 66' | 1,188 sqft
IMAGE SHOWN WITH OPTIONS:
 - METAL WEDGE ROOF & RIPPLE COVE SIDING PACKAGE
 - VICTORIA FRONT DOOR
 - 9-LITE REAR DOOR
 - BOX BAY W/FAUX STONE & 48x60v WINDOW
 - 48x60v & 48x12 TRANSOM WINDOWS IN LR, DR & MBR



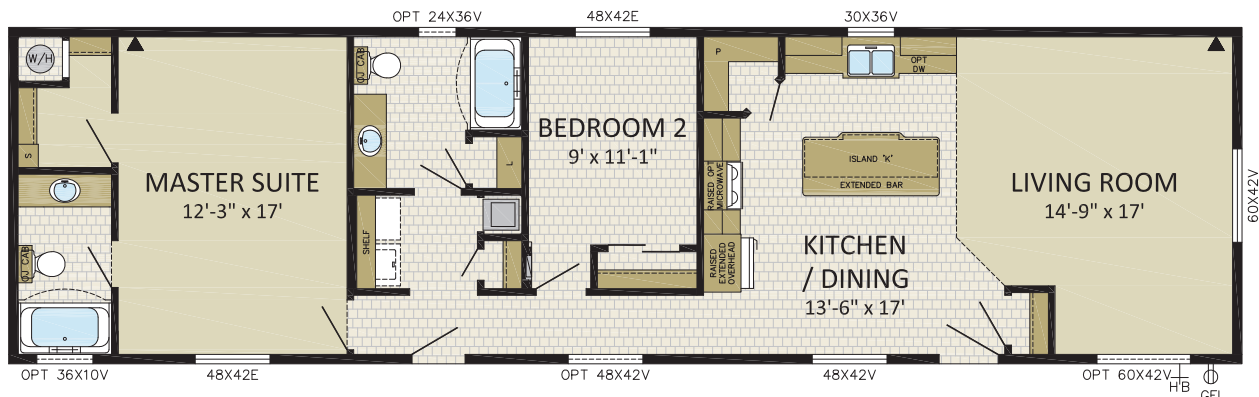
EDINBURGH
 2 BDRM, 2 BATH, FRONT LR
18CO6603
 18' x 66' | 1,188 sqft

NOTE: WEDGE ROOFS NOT AVAILABLE ON 19'-8" WIDE MODELS



IMAGE SHOWN WITH OPTIONS:

- LOUISBOURG FRONT DOOR
- 9 LITE REAR DOOR
- 36x10v BATH WINDOWS
- FAUX STONE ACCENTS
- TRANSOM WINDOWS OVER DOORS
- METAL WEDGE ROOF & RIPPLE COVE SIDING PACKAGE
- 48x76v WOLF CREEK WINDOWS IN MASTER SUITE, HALLWAY, & DINING
- 60x76v WOLF CREEK WINDOWS IN LIVING ROOM



ELYSIAN

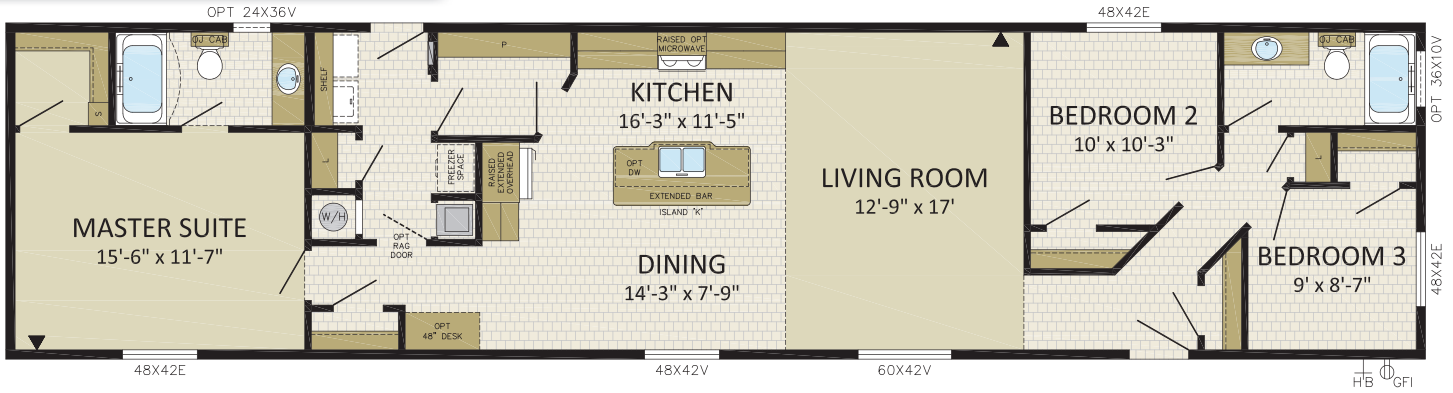
3 BDRM, 2 BATH, FRONT BDRM

18CO7601

18' x 76' | 1,368 sqft

IMAGE SHOWN WITH OPTIONS:

- 14' DORMER W/FIBER CEMENT SHAKES
- LOUISBOURG FRONT DOOR
- 48X60V IN BEDROOM 3
- BOX BAY W/FIBER CEMENT SHAKES
- 36X10V BATH WINDOW
- 18X60F/48X60V/18X60F LIVING ROOM WINDOWS



EXCELSIOR

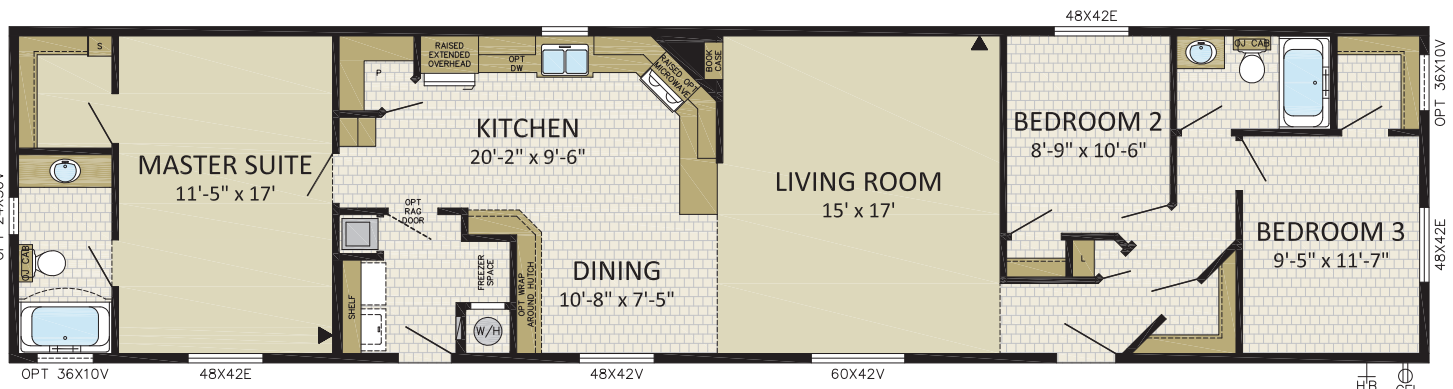
3 BDRM, 2 BATH, FRONT BDRM

18CO7602

18' x 76' | 1,368 sqft

IMAGE SHOWN WITH OPTIONS:

- LOUISBOURG FRONT DOOR
- 9 LITE REAR DOOR
- 24' DORMER W/VERTICAL METAL SIDING
- 36X10V WINDOWS IN BATH & CLOSET
- HIP ROOF ON HITCH END
- 48X60V WINDOW IN BOX BAY W/VERTICAL METAL SIDING ON HITCH END
- 48X60V WINDOWS IN LIVING ROOM, DINING & MASTER SUITE



**20'
WIDES**



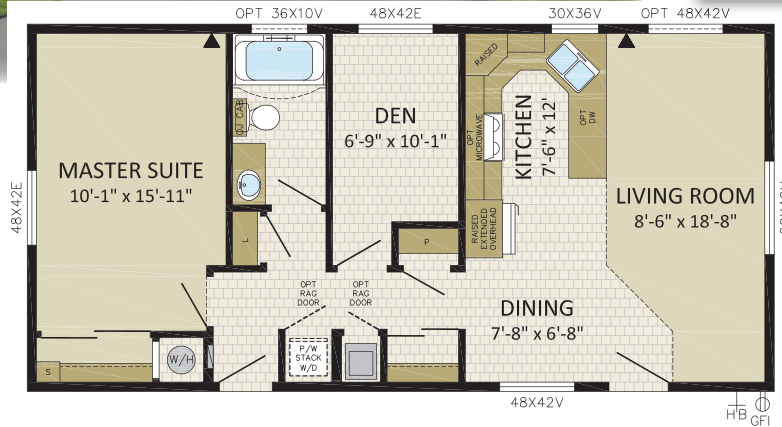
FULTON

1 BDRM, 1 BATH, DEN FRONT LR
198CO4001

19'-8" x 40' | 787 sqft

IMAGE SHOWN WITH OPTIONS:

- COLUMN "C"
- LOUISBOURG FRONT DOOR
- 9-LITE REAR DOOR
- 12' DORMER W/FIBER CEMENT SHAKES
- 60X76V WOLF CREEK WINDOW IN LR

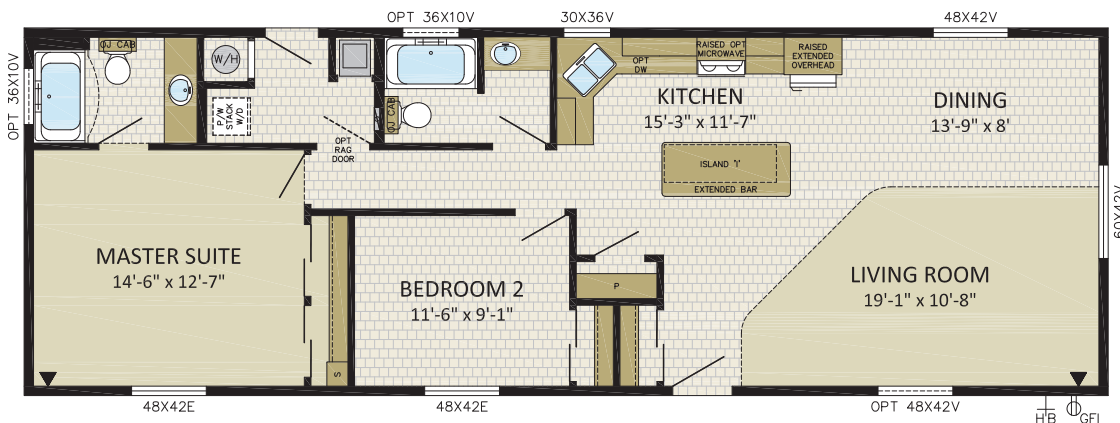


FAIRFIELD
2 BDRM, 2 BATH, FRONT LR\DR
198CO5801
19'-8" x 58' | 1,141 sqft



IMAGE SHOWN WITH OPTIONS:

- 3/4 STAR FRONT DOOR
- RIPPLE COVE SIDING PACKAGE
- 14' DORMER
- 24X76F/60X76V/24X76F WINDOWS IN LIVING ROOM
- 60X76V WOLF CREEK WINDOW IN DINING/LIVING ROOM



FREMONT

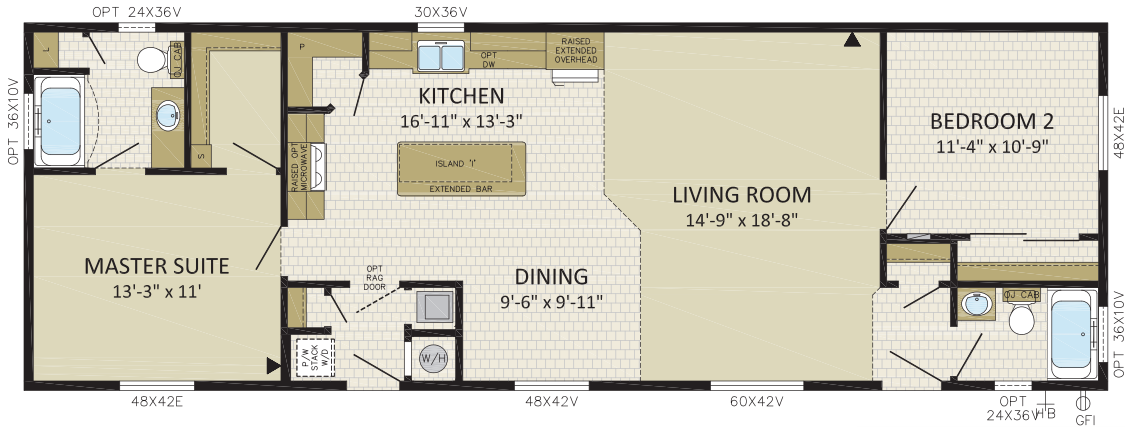
2 BDRM, 2 BATH, FRONT BDRM
198CO5802

19'-8" x 58' | 1,141 sqft



IMAGE SHOWN WITH OPTIONS:

- VICTORIA FRONT DOOR
- 9-LITE REAR DOOR
- 14' DORMER W/FAUX STONE
- 60x60V IN LIVING ROOM
- BOX BAY ON HITCH END W/FAUX STONE
- 24x36V & 36x10V BATH WINDOWS



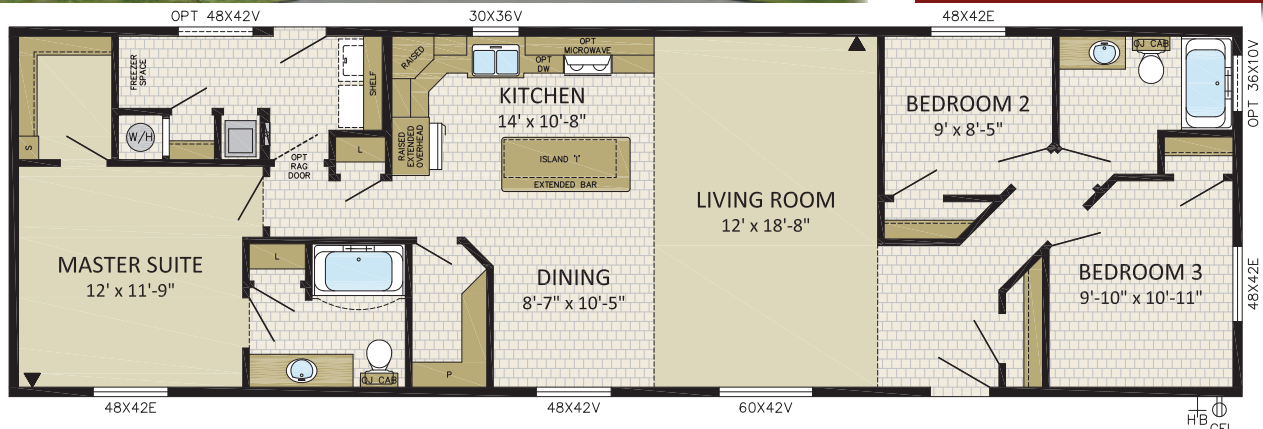
FAIRVIEW

3 BDRM, 2 BATH, FRONT BDRM
198CO6601

19'-8" x 66' | 1,298 sqft

IMAGE SHOWN WITH OPTIONS:

- Box Bay & Hip Roof w/Fiber Cement Shakes on Hitchend
- 9-Lite Front Door
- 48x60V Windows in LR, DR, BR, & MS
- 18' Double Dormer w/Cement Shakes
- 36x10V Bath Window



FORESTBROOK

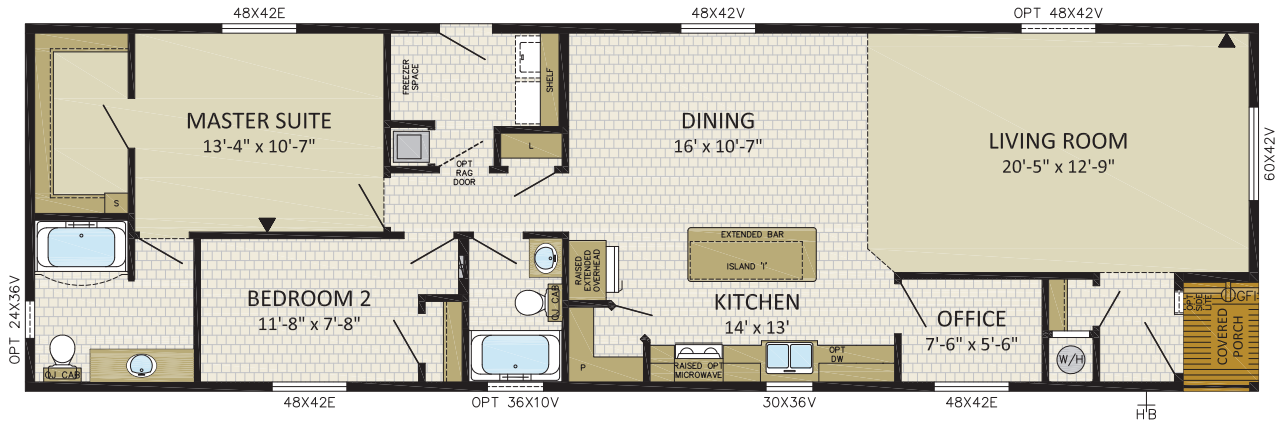
2 BDRM, 2 BATH, OFFICE, FRONT LR

198CO6603

19'-8" x 66' | 1,298 sqft

IMAGE SHOWN WITH OPTIONS:

- 9-LITE FRONT DOOR
- 48x76v WINDOW IN OFFICE
- 16' DORMER w/VERTICAL METAL SIDING
- 36x10v BATH WINDOW
- 2x 30x76v WINDOWS IN LR w/VERTICAL METAL SIDING
- PAINTED PORCH POSTS



FAIRCREST

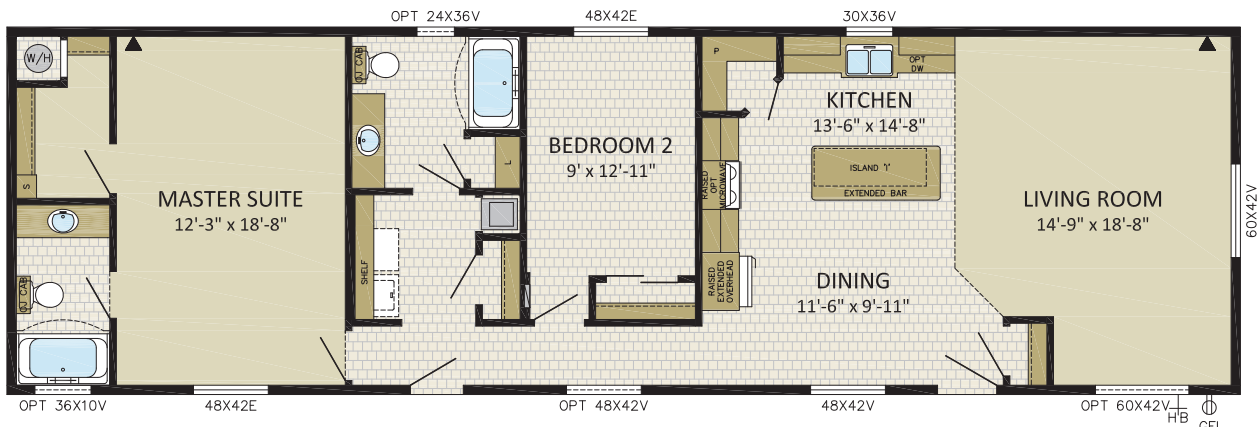
2 BDRM, 2 BATH, FRONT LR

198CO6604

19'-8" x 66' | 1,298 sqft

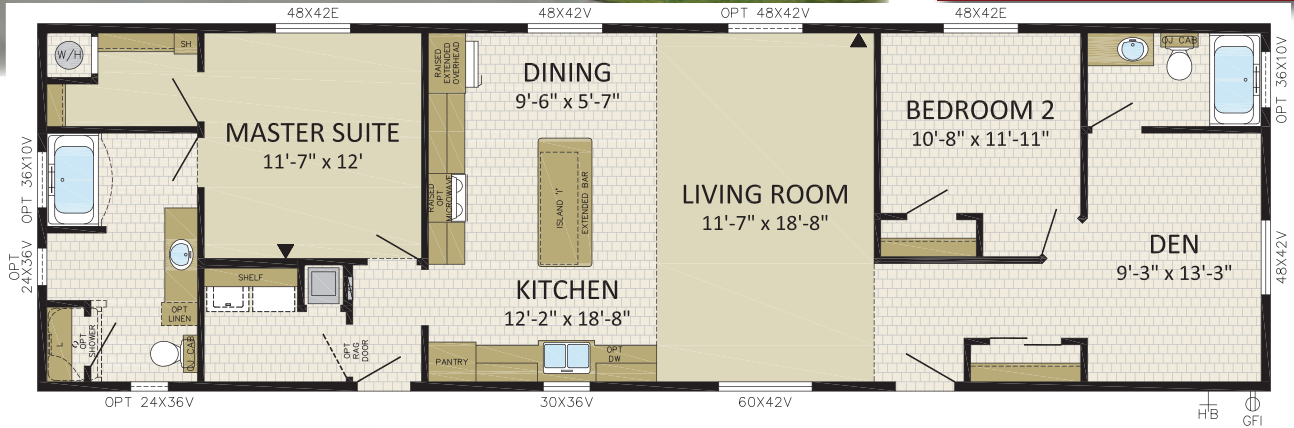
IMAGE SHOWN WITH OPTIONS:

- 8' PORCH w/ PAINTED POSTS
- 9-LITE FRONT & REAR DOORS
- 36x10v BATHROOM WINDOW
- 14' DORMER w/VERTICAL METAL SIDING
- PATIO DOOR w/2x 24x60v WINDOWS IN LIVING ROOM
- 60x42v WINDOW IN LIVING ROOM & 48x42v WINDOW IN HALLWAY





FRAZIER
 2 BDRM, 2 BATH, DEN
198CO6605
 19'-8" x 66' | 1,298 sqft
IMAGE SHOWN WITH OPTIONS:
 - LOUISBOURG FRONT DOOR
 - 9-LITE REAR DOOR
 - BOX BAY W/FAUX STONE ON HITCHEND
 - 14' DORMER W/ FAUXSTONE
 - 48X60V WINDOWS IN LR & DEN
 - 24X36V & 36X10V WINDOWS IN BATHS
 - RIPPLE COVE SIDING PACKAGE

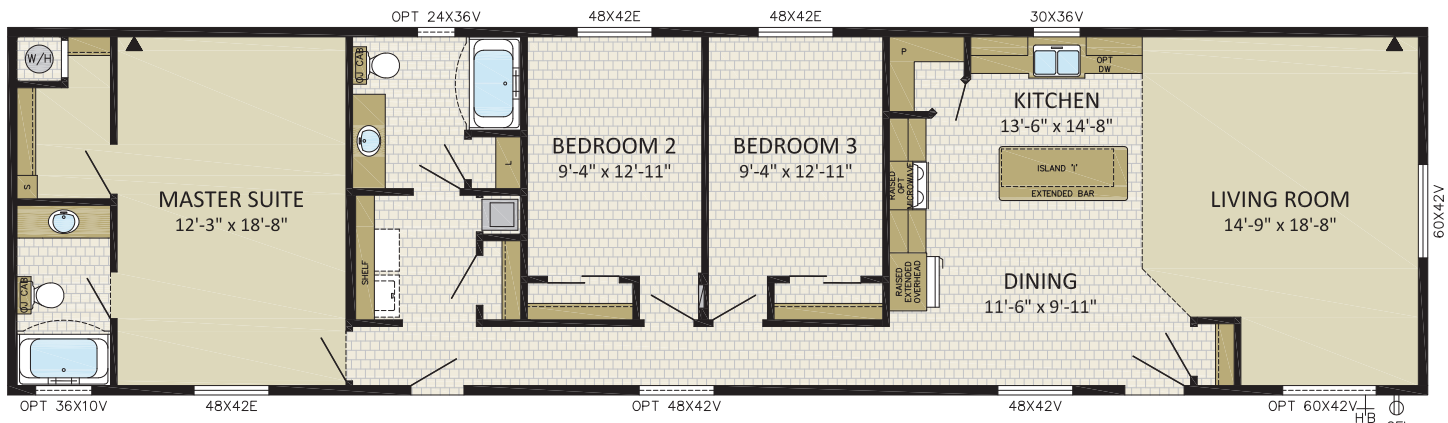


FAIRHAVEN
 3 BDRM, 2 BATH, FRONT LR
198CO7601
 19'-8" x 76' | 1,495 sqft



IMAGE SHOWN WITH OPTIONS:
 - VICTORIA FRONT DOOR
 - 9-LITE REAR DOOR
 - 60x76V WINDOWS IN LR & DR
 - 36x10V WINDOW IN BATH

- 18' DORMER W/FIBER CEMENT SHAKES & HALF FAUX STONE
 - HIP ROOF W/FIBER CEMENT SHAKES & HALF FAUX STONE
 - 48X42V WINDOW IN HALLWAY



FENWICK

4 BDRM, 2 BATH

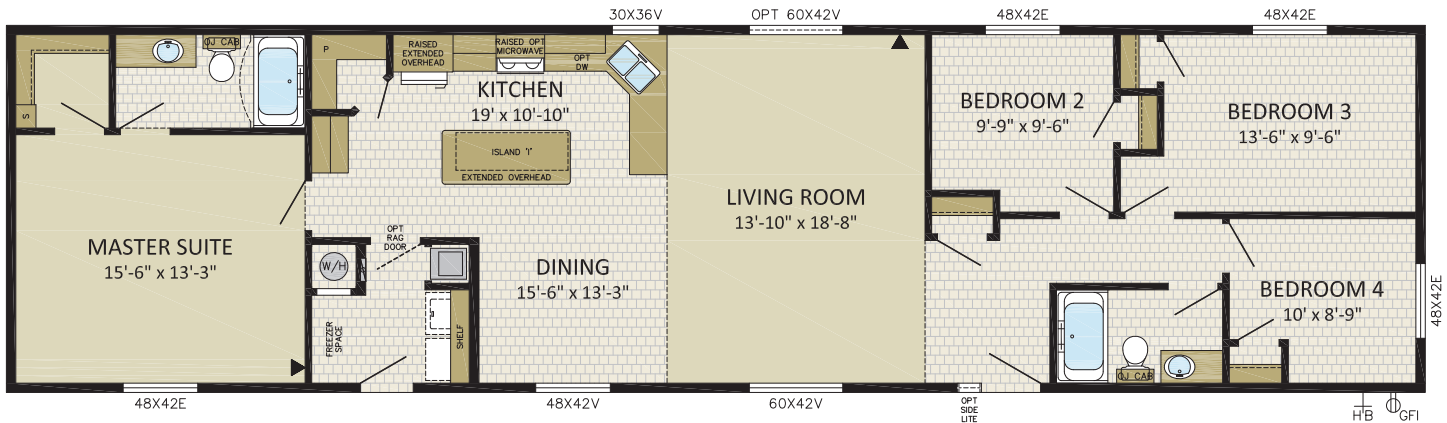
198CO7602

19'-8" x 76' | 1,495 sqft



IMAGE SHOWN WITH OPTIONS:

- VICTORIA FRONT DOOR W/SIDELITE
- 9-LITE REAR DOOR
- RIPPLE COVE SIDING PACKAGE
- 18' DOUBLE DORMER W/FIBER CEMENT SHAKES
- BOX BAY W/FIBER CEMENT SHAKES ON HITCHEND



FAIRWOOD

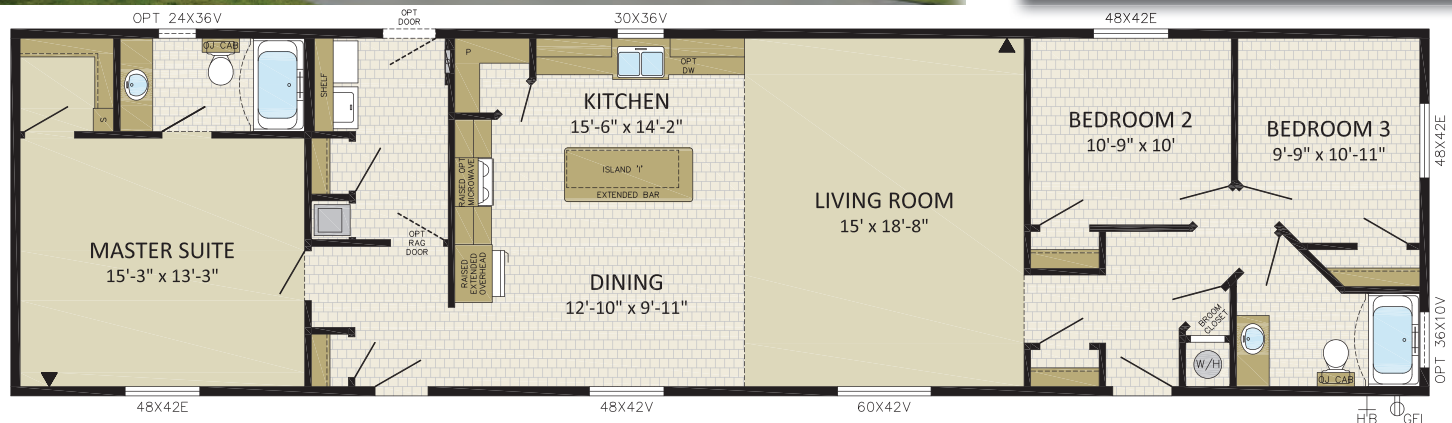
3 BDRM, 2 BATH

198CO7603

19'-8" x 76' | 1,495 sqft

IMAGE SHOWN WITH OPTIONS:

- VICTORIA FRONT & 9-LITE REAR DOORS
- 16' DORMER W/FIBER CEMENT SHAKES
- 36X10V BATH WINDOW
- HIP ROOF W/FIBER CEMENT SHAKES
- 60X60V LIVING ROOM WINDOW
- CARPORT SUPPLIED & INSTALLED ONSITE BY OTHERS



CUSTOM

2 BDRM, 2 BATH, ENTRY PORCH
19'-8" x 66' | 1,298 sqft



IMAGE SHOWN WITH OPTIONS:

- 8' PORCH W/GABLE
- LOUISBOURG FRONT DOOR
- 9-LITE REAR DOOR
- WOLF CREEK 48x76V IN LR, SMART TRIM ON WINDOWS
- CARPORT SUPPLIED & INSTALLED BY OTHERS ONSITE



Photo Shows:

- Brioso Tub
- Barnboard accent wall paneling
- 42x10 Crossreed windows in Box Bay



Photo Shows:

- 4' Halo Shower
- Chrome Rain Showerhead & Hand Held Showerhead
- Utile Shower Panels



www.modulinepenticton.ca



a proud supporter of
Ronald McDonald House

Authorized Dealer:

1175 Railway Street
Penticton, BC
V2A 5X5

P:250-493-0122
F:250-493-0133

7/23

DISCLAIMER:

Due to continuous product development and improvement, prices, specifications, and materials are subject to change without notice or obligation. Square footage and other dimensions are approximate. Included images are artist renderings and are not intended to be an accurate representation of the home. Renderings and floorplans may be shown with optional features or third-party additions.