

cornerstone

single sections



14' and 16' Wide Homes



Scan on your Mobile Device
to get your Digital Brochure



www.modulinepenticton.ca



Cornerstone Single Sections

Standard Features and Specifications

GENERAL CONSTRUCTION		
Built to Code	CSA Z-240 Zone 4,5	
Snow load	94psf/4.53kpa GSL 52psf/2.49kpa Design Load	
Insulation	Ceiling: R40 Walls: R22 Floor: R33	
Floor Joist	14 Wide 2x8	15-8 Wide 2x10
Decking	5/8" T&G OSB	
Roof Pitch	14 Wide 4/12	15-8 Wide 4/12
Roofing	Architectural Shingle	
Eaves	14 Wide	15-8 Wide
Front	16"	16"
Side	3"	3"
Rear	3"	3"
Exterior Walls	8' 2x6	
Interior Walls	2x4 Vinyl Covered Drywall Panel	
Ceiling	Textured Drywall Vault Living Room, Dining Room, Kitchen	
Siding	Maintenance Free Vinyl Lap	
Fascia	White 8" Smart Trim	
Front End	Eyebrow	
Windows	Double Low E, Argon, PVC w/Vinyl sills Cordless Cellular Shades (excludes obscured & transoms)	
Doors	2 Panel Insulated with Dead Bolt. Peep hole at Front 36" Front 32" Rear Decorative Coach Light at all entrances (exc porch)	

SPACIOUS BATHS		
Ceramic Tile Backsplash		
Vanity Mirror with Bar Light		
One-Piece Fiberglass Tub/Shower with Single Lever Faucet		
Power Bath Fan on Separate Switch		
GFI Receptacle		
Comfort Height, Dual Flush Toilet		
Wall Mounted Over John Cabinet		
Curved Shower Rod & Curtain (Select Plans)		

UTILITY SERVICES	
Electrical Service	100 AMP
Heating	96% High Efficiency 2 stage Gas Furnace, A/C Ready
Water Heater	40 Gallon Electric
Communication Outlets	(1) Primary Bedroom, (1) Living
Smoke & CO2 Detectors per code	
Wired, Plumbed & Vented for Washer & Dryer	
Continuous Whole House Fan	
Shut Off Valves at all Sinks	
Exterior Frost Free Tap	
Exterior GFI Electrical Outlet	
Heat Tape Plug	

TASTEFUL INTERIORS	
Flooring	Carpet: Primary Bedroom, Living Room Quality Cushioned Linoleum: All other areas
Designer Glass Light Fixtures	
Prefinished Interior Doors	
Single Rod with Shoe Shelf in Primary Bedroom Closet	
Linen Closet (plan specific)	
Utility Room Shelf (plan specific)	

BRIGHT, BEAUTIFUL KITCHENS	
European Deluxe Cabinetry with Crown Moulding	
Raised & Extended Fridge Cabinet	
Ceramic Tile Backsplash	
Double Stainless Steel Kitchen Sink	
Chrome Single Handle Pull Out Faucet	
Window over Kitchen Sink (plan specific)	
Exterior Vented Range Hood with Light	
Fridge Opening 36"x72"	
18 cu ft, 2 Door Frost Free Refrigerator	
30" Electric Range	

10 Year Warranty

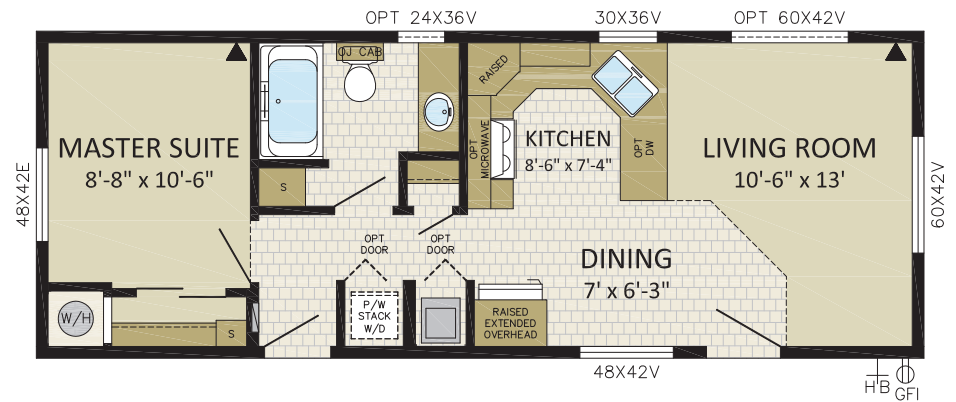
NEW

**14'
WIDES**



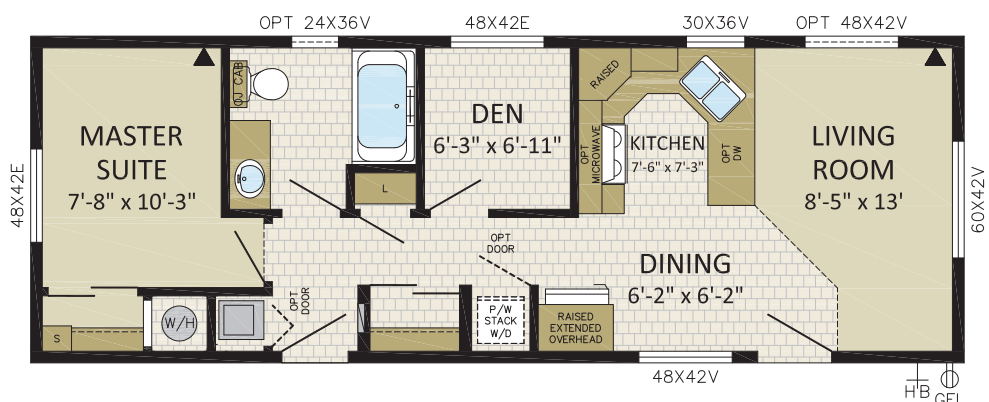
ST. ANNE
1 BDRM, 1 BATH, FRONT LR
14CO3803
14' x 38' | 532 sqft

- IMAGE SHOWN WITH OPTIONS:
- LOUISBOURG FRONT DOOR
 - 12' DORMER WITH FIBER CEMENT SHAKES
 - 9 LITE REAR DOOR
 - BOX BAY WITH FIBER CEMENT SHAKES
 - FIBER CEMENT SIDING
 - DECK BY OTHERS



SAVOY
1 BDRM, 1 BATH, DEN, FRONT LR
14CO4001
14' x 40' | 560 sqft
IMAGE SHOWN WITH OPTIONS:

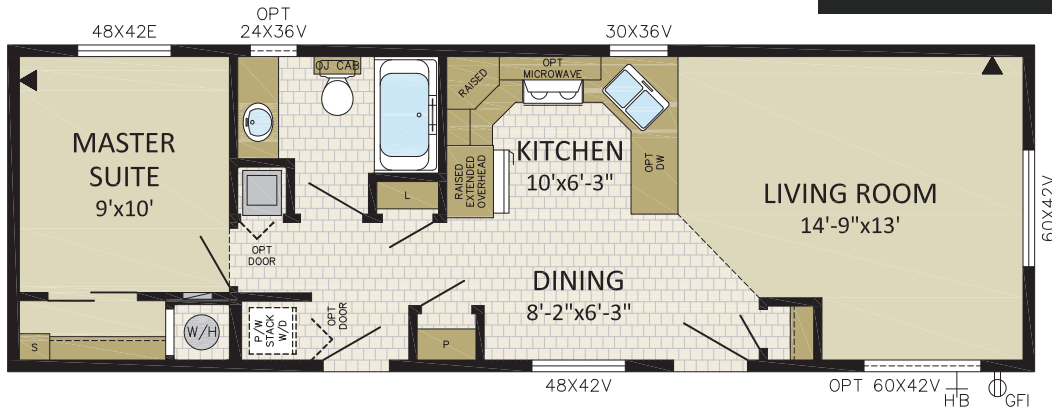
- VICTORIA FRONT DOOR
- 9 LITE REAR DOOR
- HORIZON FIBER CEMENT SIDING PKG.
- 48x60v WINDOW IN LIVING ROOM
- DECK BY OTHERS





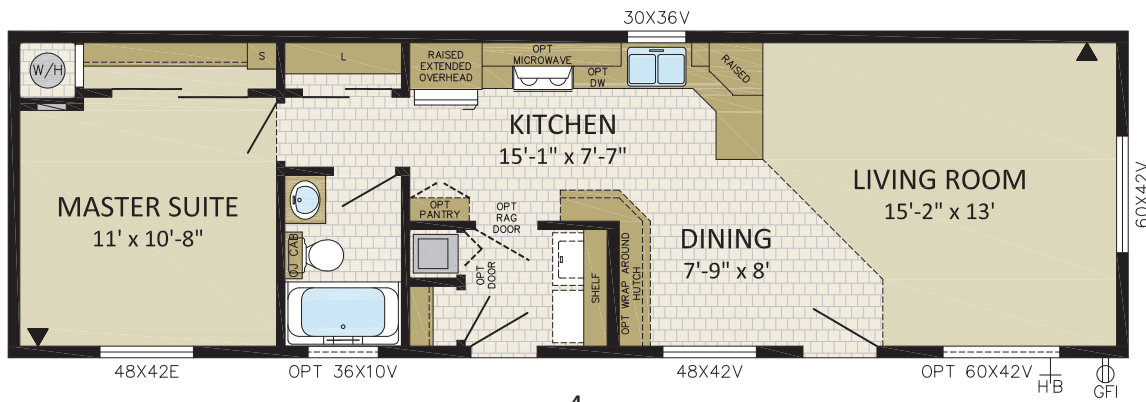
ST. CLAIR
 1 BDRM, 1 BATH, FRONT LR
14CO4401
 14' x 44' | 616 sqft

IMAGE SHOWN WITH OPTIONS:
 - 9 LITE FRONT AND REAR DOOR
 - 60x42V WINDOW IN LIVING ROOM
 - 12' DORMER
 - SMART EXTERIOR WINDOW TRIM
 - DECK BY OTHERS



SALEM
 1 BDRM, 1 BATH, FRONT LR
14CO4801
 14' x 48' | 672 sqft

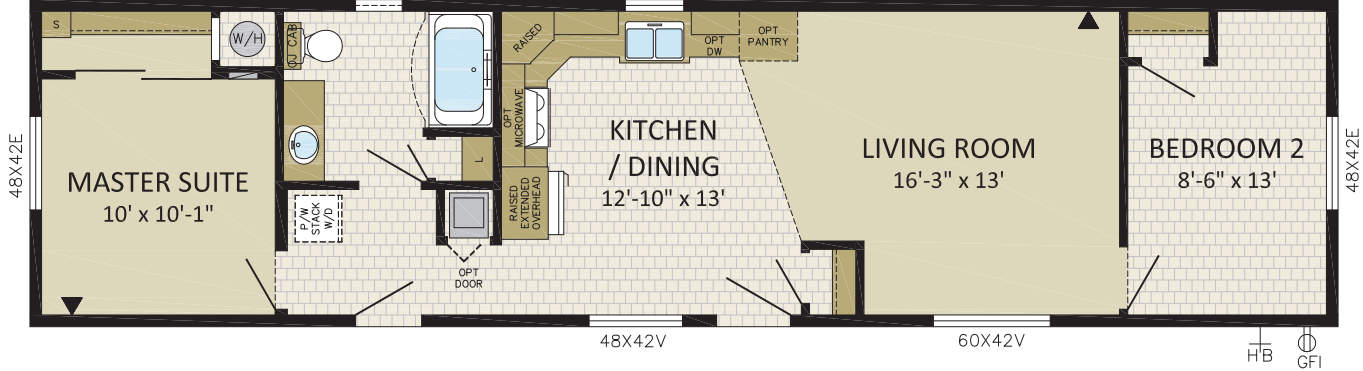
IMAGE SHOWN WITH OPTIONS:
 - 3/4 STAR FRONT DOOR
 - 9 LITE REAR DOOR
 - DECK BY OTHERS
 - 36x10V IN BATH
 - 48x60V IN MBR, DINING AND LIVING ROOM
 - 12' DORMER WITH FIBER CEMENT SHAKES
 - BOX BAY WITH HIP ROOF AND FIBER CEMENT SHAKES
 - GABLE HIP WITH CEMENT SHAKES





SKAGIT
 2 BDRM, 1 BATH, FRONT BDRM
14CO5601
 14' x 56' | 784 sqft
 IMAGE SHOWN WITH OPTIONS:
 - VICTORIA FRONT & 9 LITE REAR DOORS
 - 12' DORMER WITH CEMENT SHAKES
 - FIBER CEMENT SHAKES IN BOX BAY
 - FRONT BOX BAY/HIP ROOF WITH CEMENT SHAKES
 - 48X60V IN DINING, LR & BED#2
 - DECK BY OTHERS

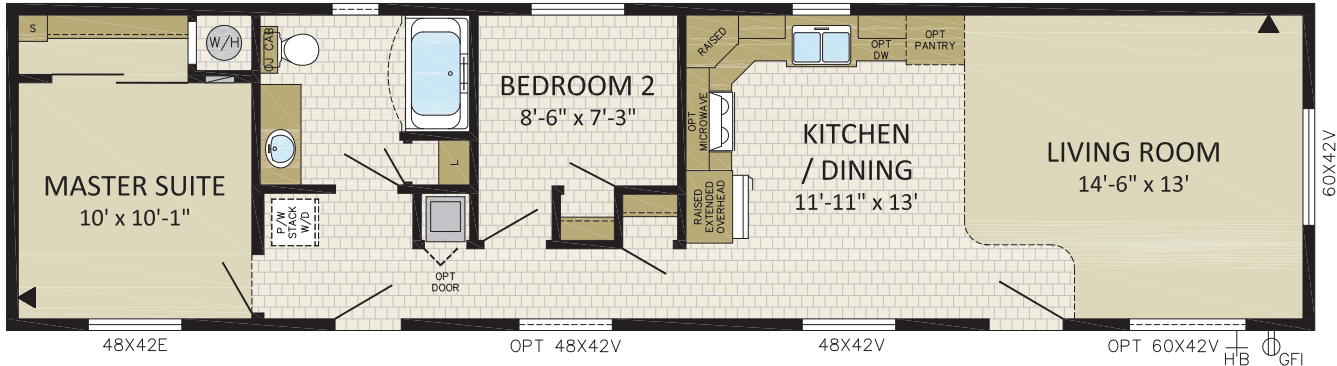
OPT 24X36V 30X36V



SHANNON
 2 BDRM, 1 BATH, FRONT LR
14CO5602
 14' x 56' | 784 sqft

IMAGE SHOWN WITH OPTIONS:
 - FIBER CEMENT SIDING - 3/4 STAR LITE FRONT DOOR
 - 9 LITE REAR DOOR - 20' SHED DORMER WITH 48X12 TRANSOM WINDOWS
 - DECK BY OTHERS - 60X42V IN LIVING ROOM & 48X42V IN HALLWAY

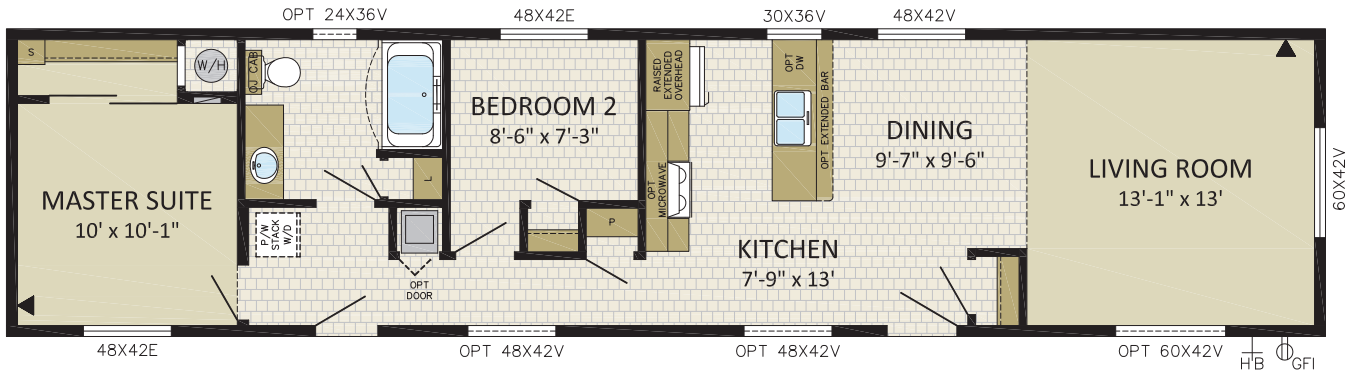
OPT 24X36V 48X42E 30X36V



NEW

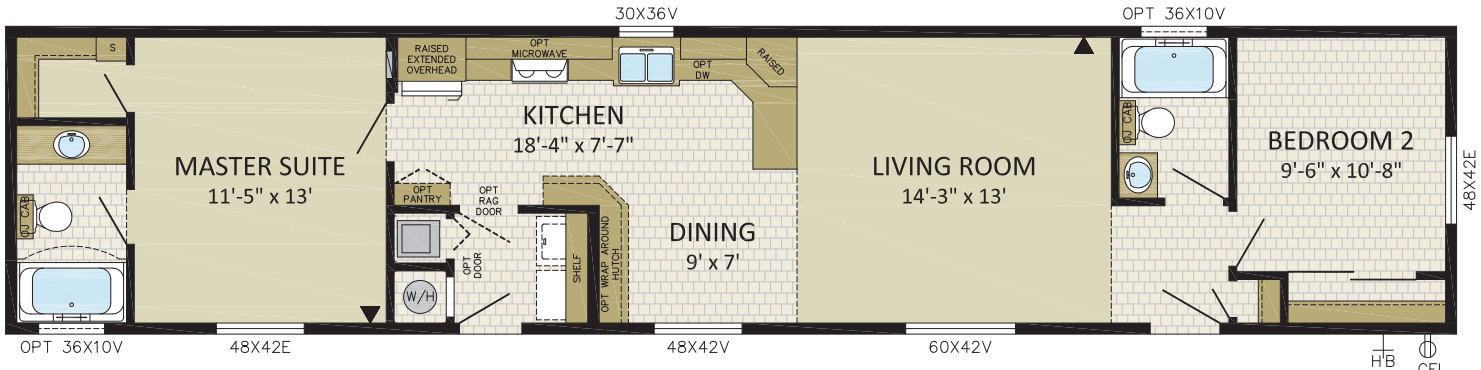


SHELBY
 2 BDRM, 1 BATH, FRONT LR
14CO6010
 14' x 60' | 840 sqft
 IMAGE SHOWN WITH OPTIONS:
 - HORIZON FIBER CEMENT PKG
 - 12' DORMER
 - 48x60v WINDOW IN LIVING ROOM
 - 48x42v WINDOW IN HALLWAY & KITCHEN
 - 8' FRONT PORCH WITH VAULT
 - 6' PATIO DOOR & SUN PEAK WINDOW
 - LOUISBOURG FRONT DOOR
 - DECK BY OTHERS



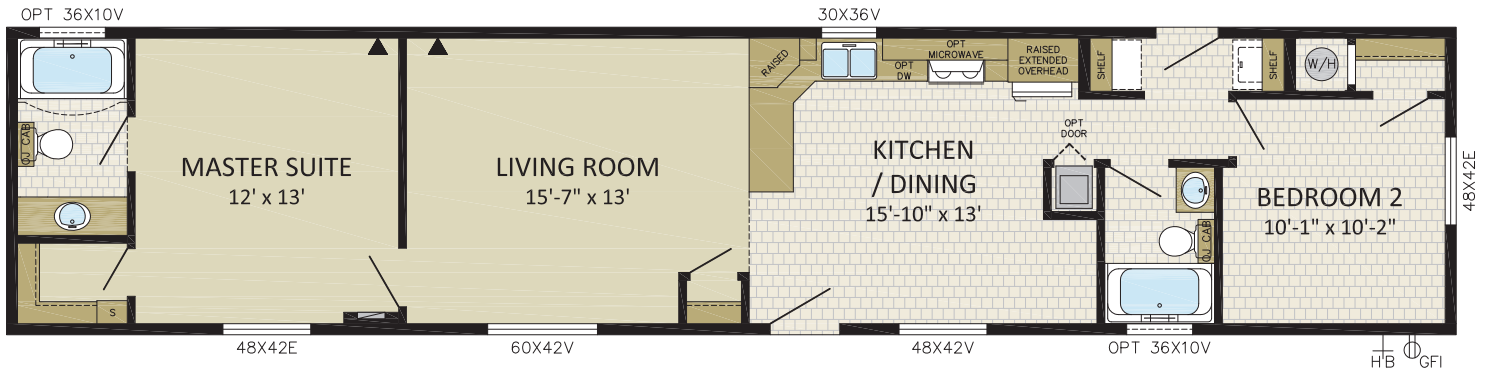
SHASTA
 2 BDRM, 2 BATH, FRONT BDRM
14CO6601
 14' x 66' | 924 sqft

IMAGE SHOWN WITH OPTIONS:
 - HORIZON FIBER CEMENT PKG - Wolfe Creek Windows in LR & Bed #2
 - 48x60v in MBR & Dining - 36x10v Window in Ensuite
 - Front Box Bay - 9 Lite Front and Rear Door
 - Deck by Others - 18' Dormer with Fiber Cement Shakes



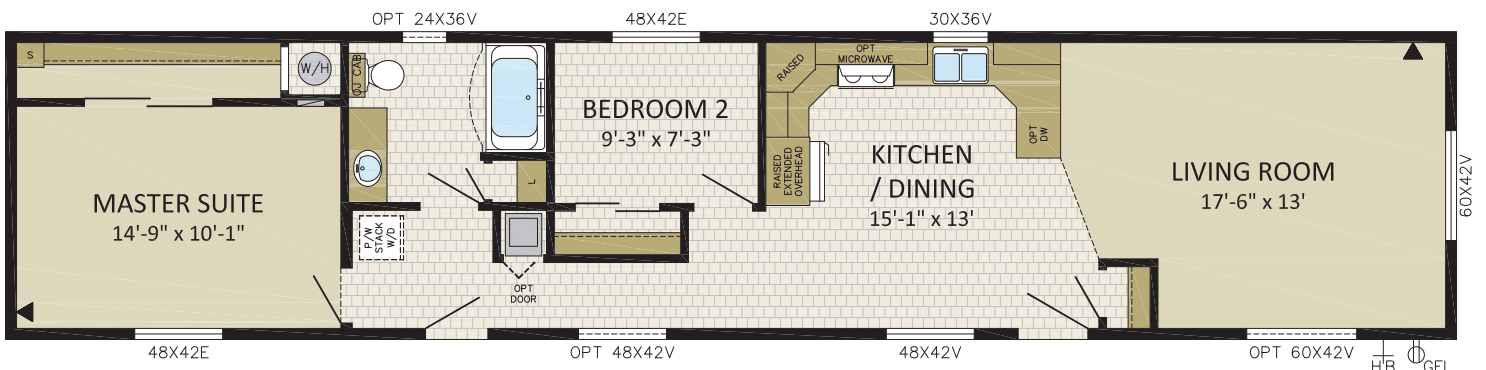


SETON
 2 BDRM, 2 BATH, FRONT BDRM
14CO6602
 14' x 66' | 924 sqft
 IMAGE SHOWN WITH OPTIONS:
 - 14' DORMER WITH FAUX STONE
 - FRONT BOX BAY WITH HIP ROOF & STONE
 - 36x10v BATHROOM WINDOW
 - 48x60v LR, DINING, MBR & BED2
 - FIBER CEMENT SIDING
 - LOUISBOURG FRONT DOOR
 - DECK BY OTHERS



SABINE
 2 BDRM, 1 BATH, FRONT LR
14CO6603
 14' x 66' | 924 sqft

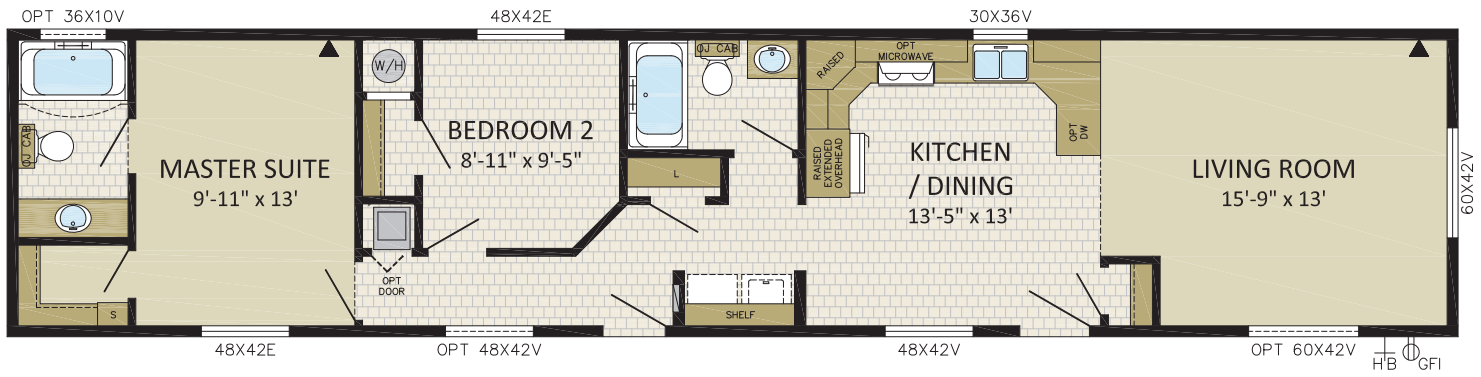
IMAGE SHOWN WITH OPTIONS:
 - FRONT BOX BAY
 - 14' DORMER
 - 48x42V IN HALLWAY
 - DECKS BY OTHERS
 - HORIZON FIBER CEMENT SIDING PKG
 - VICTORIA FRONT DOOR & 9 LITE REAR DOOR
 - 60x42V WINDOW IN LIVING ROOM





SUMAS
 2 BDRM, 2 BATH, FRONT LR
14CO6604
 14' x 66' | 924 sqft

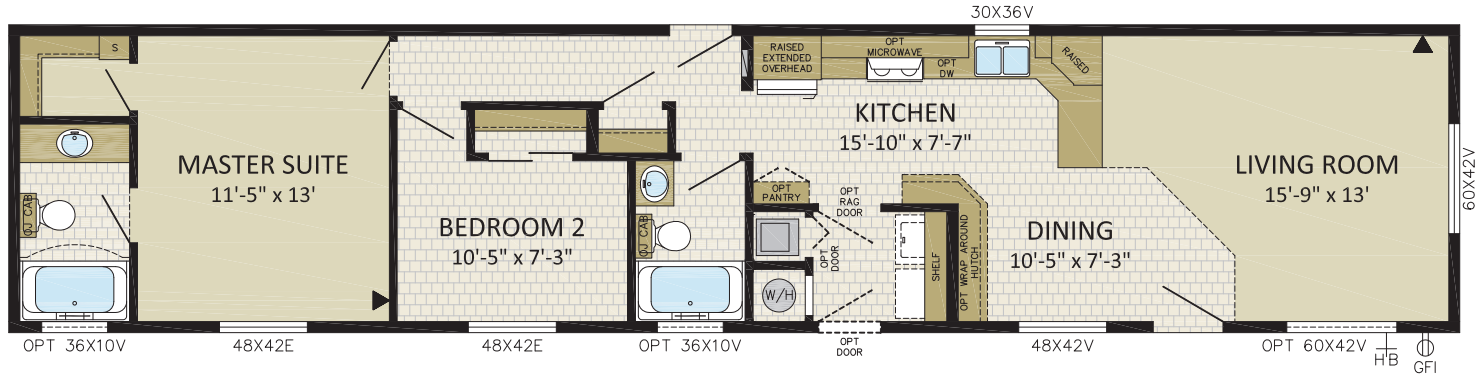
- IMAGE SHOWN WITH OPTIONS:
- FIBER CEMENT SIDING
 - 3/4 STAR FRONT DOOR
 - 9 LITE REAR DOOR
 - DECK BY OTHERS
 - 12' DORMER FIBER CEMENT SHAKES IN DORMER
 - BOX BAY WITH FIBER CEMENT SHAKES
 - 60x42v WINDOW IN LIVING ROOM
 - 48x42v IN HALLWAY



SHAWNIGAN
 2 BDRM, 2 BATH, FRONT LR
14CO6605
 14' x 66' | 924 sqft

IMAGE SHOWN WITH OPTIONS:

- 9 LITE FRONT AND UTILITY DOOR
- 60x42v WINDOW IN LIVING ROOM
- 36x10v BATHROOM WINDOW
- 36x10v ENSUITE WINDOW
- A277 CODE
- DECKS, CARPORT & TRUSSES BY OTHERS



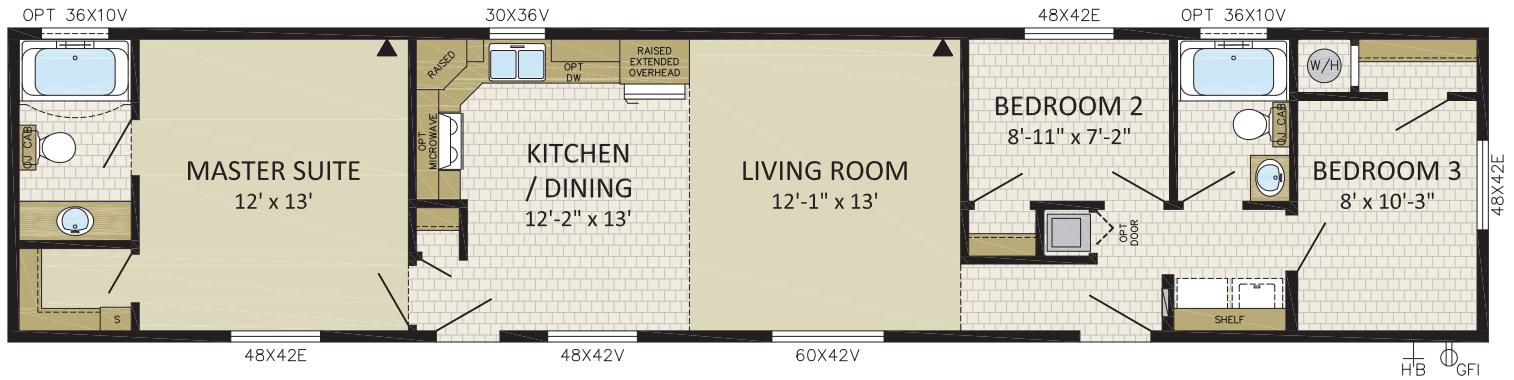


SUMMIT

3 BDRM, 2 BATH, FRONT BDRM
14CO6608
 14' x 66' | 924 sqft

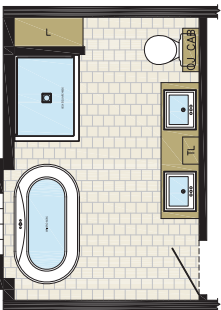
IMAGE SHOWN WITH OPTIONS:

- TAG (CUSTOM)
- 14' DORMER W/ VERT. CEMENT SIDING
- FRONT BOX BAY W/ HIP ROOF, STONE AND VERTICAL CEMENT SIDING
- LOUISBOURG FRONT DOOR W/ SIDE LITE
- 9 LITE REAR DOOR
- 48X60V IN LR, DINING, TAG & BED 3
- DECK BY OTHERS



STANTON

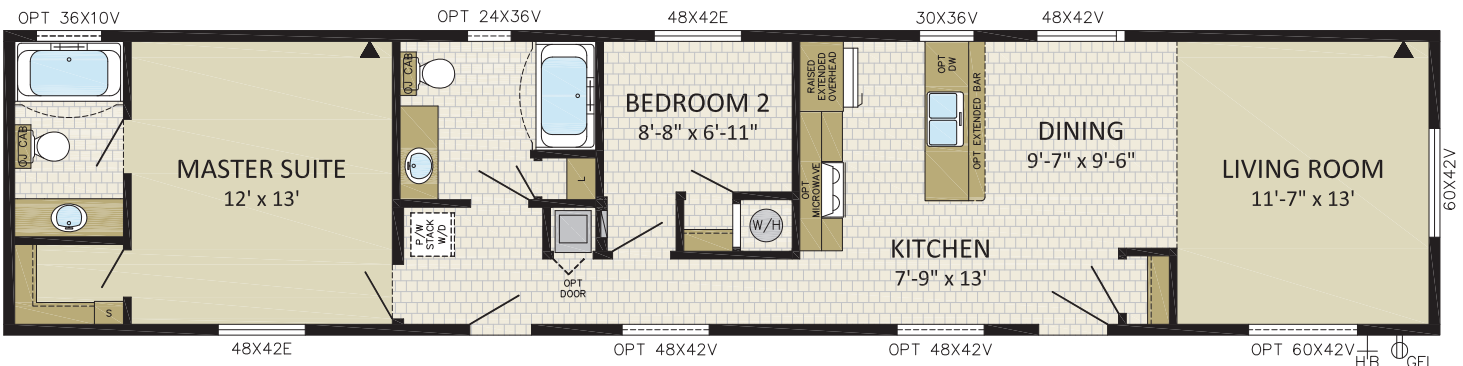
2 BDRM, 2 BATH, FRONT LR
14CO6610
 14' x 66' | 924 sqft



Optional Serenity Bathroom

IMAGE SHOWN WITH OPTIONS:

- CORRUGATED METAL SIDING
- FIBER CEMENT SIDING
- 48X60V WINDOWS IN LIVING ROOM
- FAUX STONE
- 9 LITE REAR DOOR
- WEDGE ROOF WITH METAL ROOFING
- TRANSOM WINDOWS
- 48X42V WINDOWS IN HALLWAY & KITCHEN
- LOUISBOURG FRONT DOOR WITH SIDE LIGHT
- DECKS BY OTHERS



**16'
WIDES**

NEW

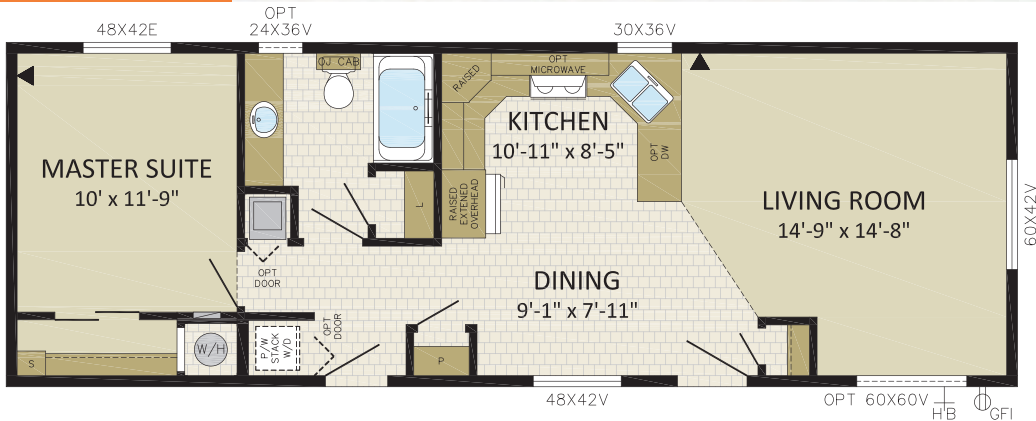


BAILEY

1 BDRM, 1 BATH, FRONT LR
158CO4611
15' 8" x 46' | 721 sqft

IMAGE SHOWN WITH OPTIONS:

- RIPPLECOVE PKG
- 6' PATIO DOOR
- LOUISBOURG FRONT DOOR
- 60x60V IN LIVING ROOM
- 8' PORCH WITH VAULT
- 14' DORMER
- 9 LITE REAR DOOR

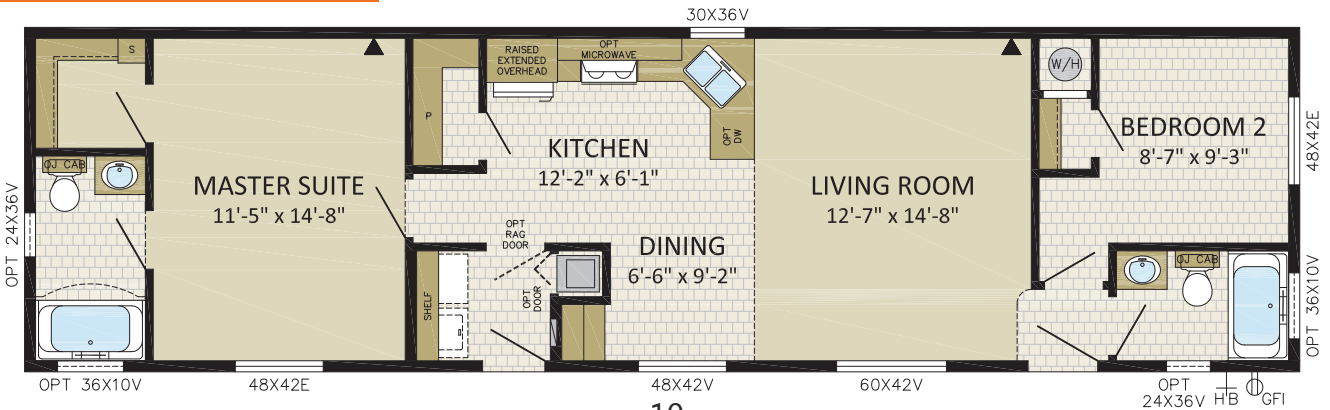


BOWRON

2 BDRM, 2 BATH, FRONT BDRM
158CO5801
15' 8" x 58' | 908 sqft

IMAGE SHOWN WITH OPTIONS:

- 18' DOUBLE DORMER
- HORIZON FIBER CEMENT PKG
- 3/4 STAR FRONT DOOR W/SIDE LIGHT
- 9 LITE REAR DOOR
- 24x36V MAIN BATH
- 48x76V WOLFCREEK WINDOW IN LR
- 36x10V IN MAIN BATH & ENSUITE



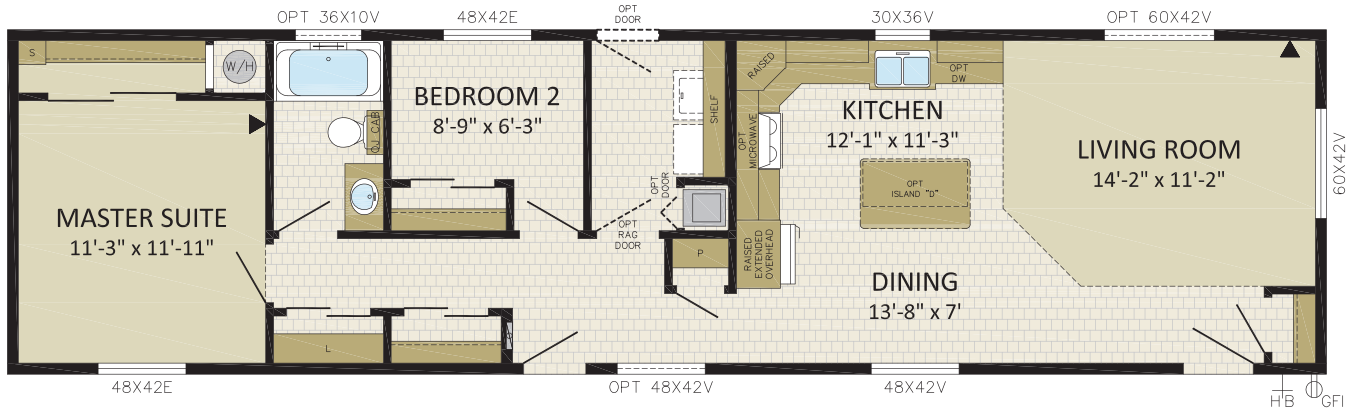
NEW



BANBURY
 2 BDRM, 1 BATH, FRONT LR
158CO6010
 15' 8" x 60' | 940 sqft

IMAGE SHOWN WITH OPTIONS:

- SKYVIEW WINDOW PKG
- VICTORIA FRONT DOOR
- DECK BY OTHERS
- SMART BOARD WINDOW TRIM & CORNERS
- 9 LITE REAR DOOR
- 48x60v IN HALLWAY AND LIVING ROOM



NEW



BARTON
 2 BDRM, 2 BATH, FRONT LR
158CO6401
 15' 8" x 64' | 1,003 sqft
 IMAGE SHOWN WITH OPTIONS:

- FIBER CEMENT SIDING
- 14' DORMER & FRONT BOX BAY WITH FIBER CEMENT SHAKES
- LOUISBOURG FRONT & 9 LITE REAR DOOR
- 72x76v WOLFCREEK LR WINDOWS
- 48x76v WOLFCREEK MBR WINDOW
- 42x52v WOLFCREEK DINING
- 36x10v ENSUITE WINDOW
- DECK BY OTHERS

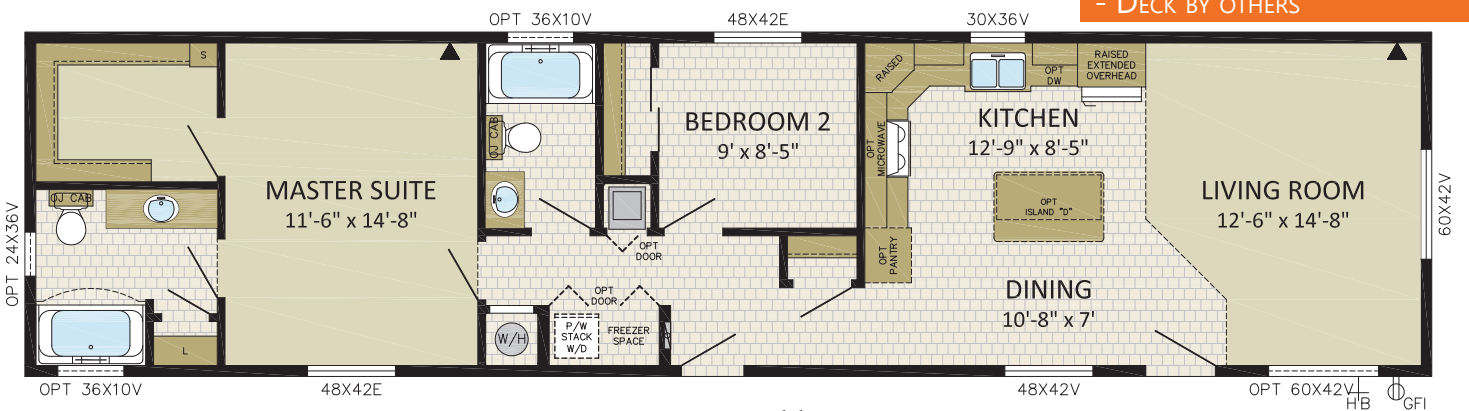




IMAGE SHOWN WITH OPTIONS:

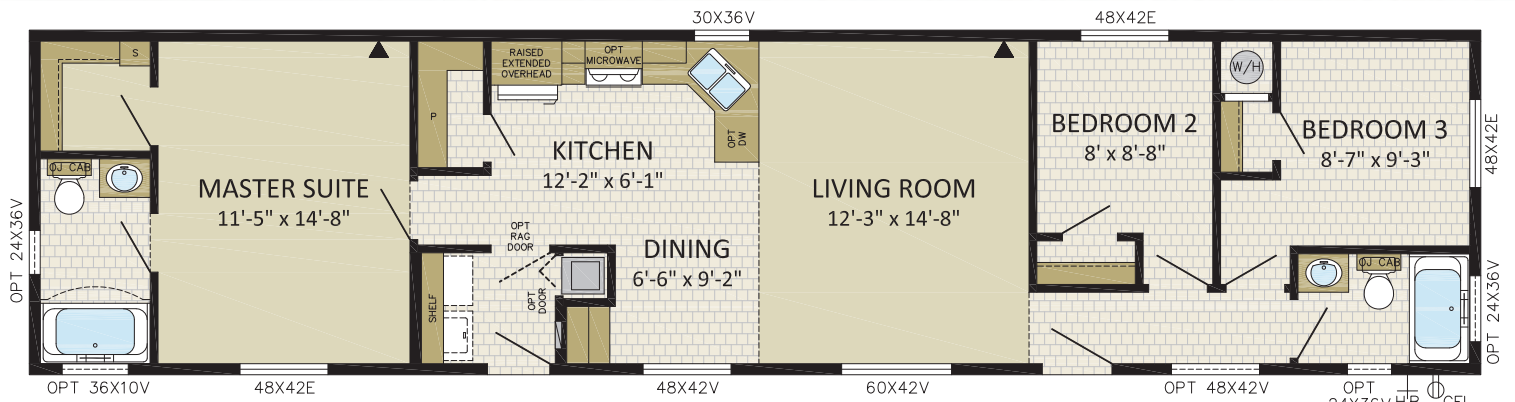
- FIBER CEMENT SIDING
- VICTORIA FRONT DOOR
- 48x60v IN BED #3
- 36x10v IN ENSUITE
- DECK BY OTHERS
- 30' SHED DORMER WITH TRANSMOM WINDOWS
- 9 LITE REAR DOOR
- FRONT BOX BAY W/ HIP ROOF & VERTICAL CEMENT SIDING
- 36x10v & 24x36v WINDOWS IN MAIN BATH
- 48x60v WINDOWS IN DR, LR, MBR & HALLWAY

BURRARD

3 BDRM, 2 BATH, FRONT BDRM

158CO6601

15' 8" x 66' | 1,034 sqft



BURKLEY

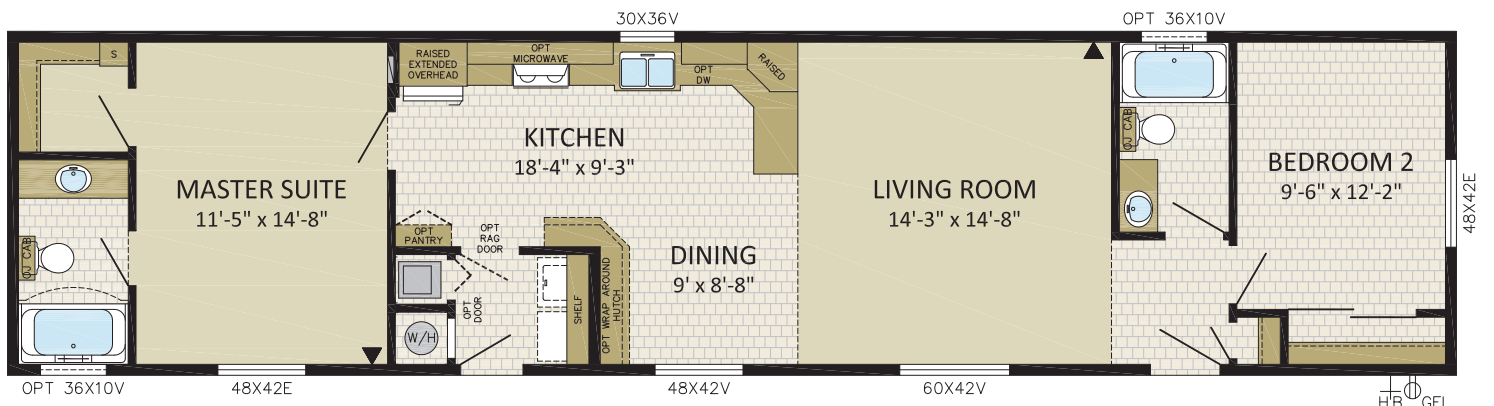
2 BDRM, 2 BATH, FRONT BDRM

158CO6602

15' 8" x 66' | 1,034 sqft

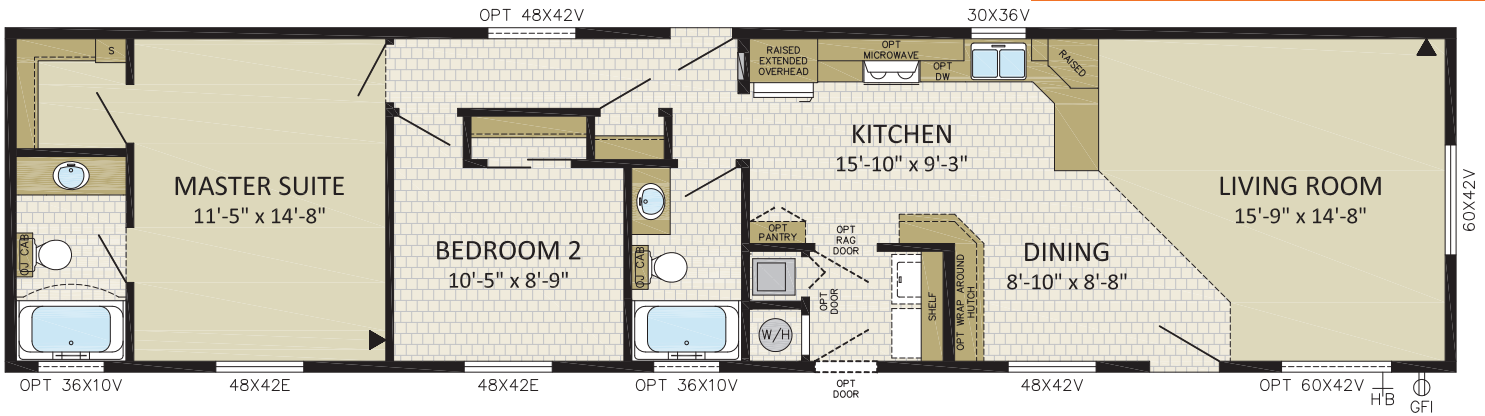
IMAGE SHOWN WITH OPTIONS:

- VICTORIA FRONT & 9 LITE REAR DOOR
- PENTAVIEW WINDOW WITH STONE
- FIBER CEMENT SIDING
- BOX BAY WITH STONE ACCENTS
- 48x60v WINDOW IN BED 2
- 36x10v WINDOW IN ENSUITE
- DECKS BY OTHERS





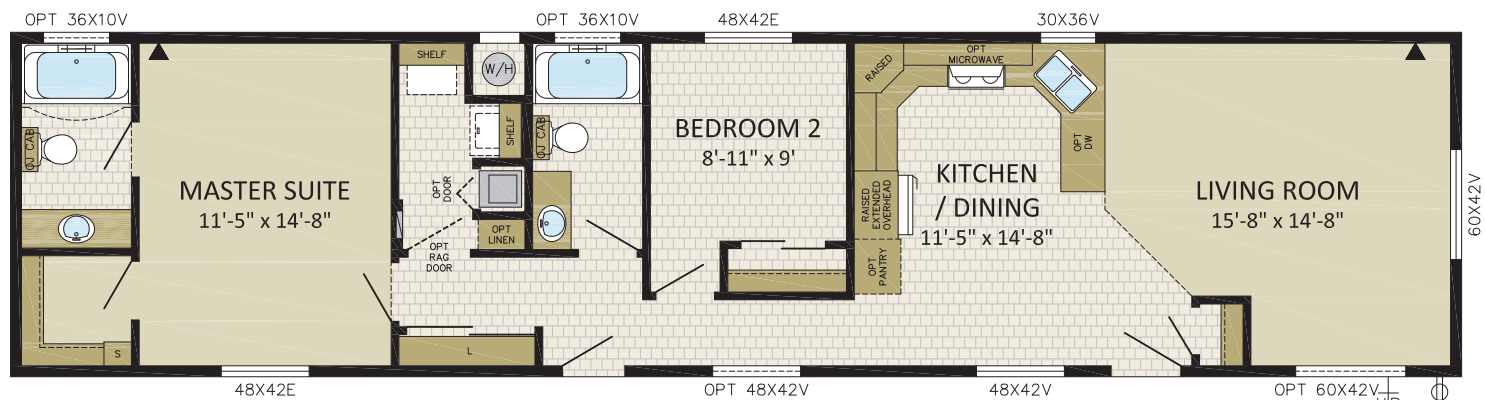
BENNETT
 2 BDRM, 2 BATH, FRONT LR
158CO6603
 15' 8" x 66' | 1,034 sqft
 IMAGE SHOWN WITH OPTIONS:
 - HORIZON FIBER CEMENT SIDING
 - 14' DORMER
 - LOUISBOURG FRONT DOOR
 - 60x60v WINDOWS IN LIVING ROOM
 - 48x60v WINDOW IN DINING
 - 36x10v WINDOW IN MAIN BATH
 - 36x10v WINDOW IN ENSUITE



BANISTER
 2 BDRM, 2 BATH, FRONT LR
158CO6605
 15' 8" x 66' | 1,034 sqft

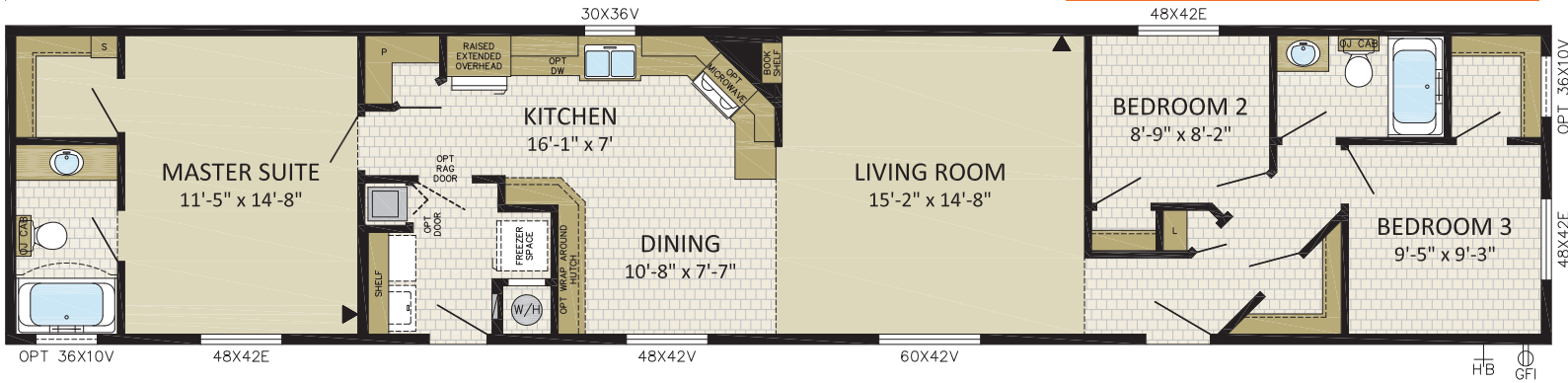
IMAGE SHOWN WITH OPTIONS:

- HORIZON FIBER CEMENT PKG
- 48x42v HALLWAY
- 60x42v WINDOW IN LIVING ROOM
- A277 OPT.
- VICTORIA FRONT AND REAR DOOR
- GARAGE AND DECK BY OTHERS
- CARPORT TRUSSES & OUTSIDE FIREPLACE FOR COVERED SEATING AREA BY OTHERS



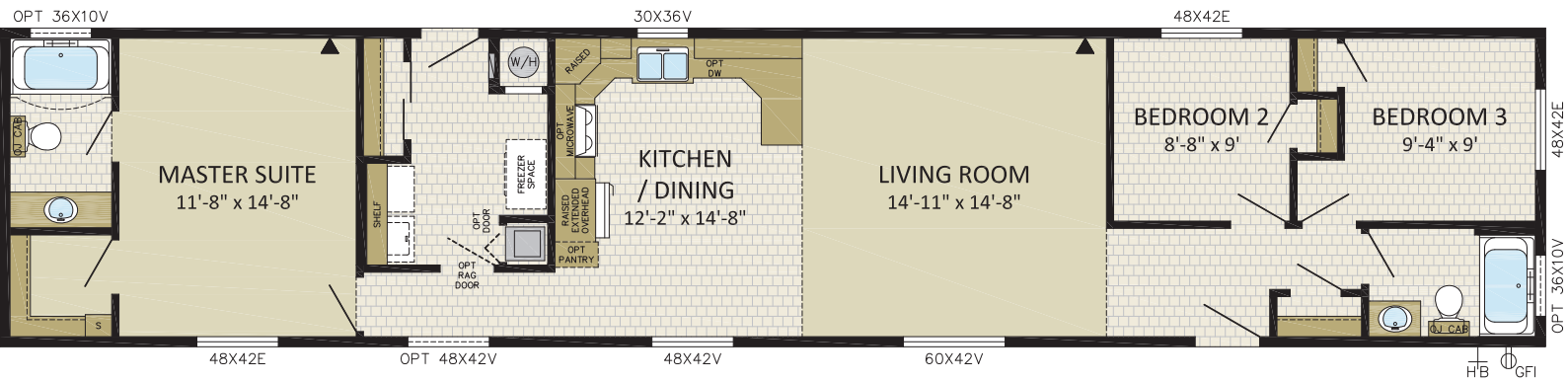


BEAUFORT
 3 BDRM, 2 BATH, FRONT BDRM
158CO7602
 15' 8" x 76' | 1,191 sqft
 IMAGE SHOWN WITH OPTIONS:
 - FIBER CEMENT SIDING
 - 24' SHED DORMER w/TRANSOM WINDOWS
 - BOX BAY w/ HIP ROOF & VERTICAL CEMENT SIDING
 - LOUISBOURG FRONT & 9 LITE REAR DOORS
 - 36x10v WINDOW IN ENSUITE & CLOSET
 - 48x60v IN LR, DINING, MBR & BED3
 - DECK BY OTHERS



BARRISDALE
 3 BDRM, 2 BATH, FRONT BDRM
158CO7603
 15' 8" x 76' | 1,191 sqft

IMAGE SHOWN WITH OPTIONS:
 - FIBER CEMENT SIDING
 - TAG WITH 48X60V AND TWO 18X60F WINDOWS
 - VERTICAL FIBER CEMENT SIDING
 - SKYVIEW WINDOW PKG
 - BOX BAY WITH HIP ROOF
 - 36x10v WINDOW IN MAIN BATH
 - 48x60v WINDOWS IN BED #3 & DINING ROOM
 - LOUISBOURG FRONT DOOR WITH SIDE LITE



NEW



IMAGE SHOWN WITH OPTIONS:

- WEDGE ROOF WITH METAL ROOF
- CORRUGATED METAL SIDING
- FIBER CEMENT SIDING
- LOUISBOURG FRONT DOOR W/ SIDE LIGHT
- 9 LITE REAR DOOR
- BOX BAYS
- TRANSOM WINDOWS
- 48x60v WINDOWS IN BED#3, DINING & MBR
- 36x10v WINDOWS IN BATH & ENSUITE
- 60x60v WINDOW IN LIVING ROOM
- DECKS BY OTHERS

BOWIE

3 BDRM, 2 BATH, FRONT BDRM

158CO7610

15' 8" x 76' | 1,191 sqft

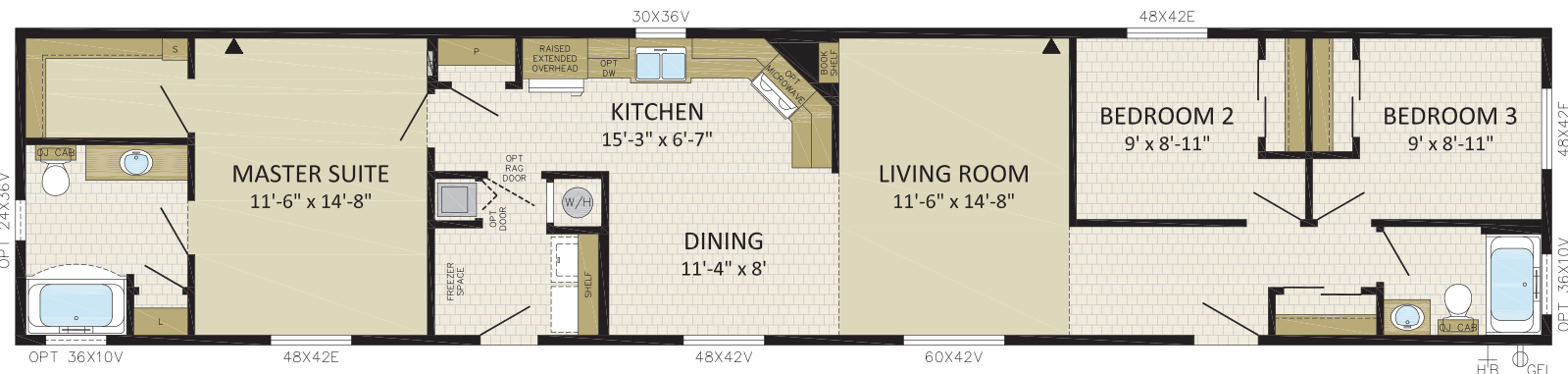


Photo Shows:

- Brioso Tub
- Barnboard accent wall paneling
- 42x10 Crossreed windows in Box Bay



Photo Shows:

- 4' Halo Shower
- Chrome Rain Showerhead & Hand Held Showerhead
- Utile Shower Panels



www.modulinepenticton.ca



a proud supporter of
Ronald McDonald House

Authorized Dealer:

1175 Railway Street
Penticton, BC
V2A 5X5

P:250-493-0122
F:250-493-0133

7/23

DISCLAIMER:

Due to continuous product development and improvement, prices, specifications, and materials are subject to change without notice or obligation. Square footage and other dimensions are approximate. Included images are artist renderings and are not intended to be an accurate representation of the home. Renderings and floorplans may be shown with optional features or third-party additions.