

cornerstone

triple sections



Scan on your Mobile Device
to get your Digital Brochure

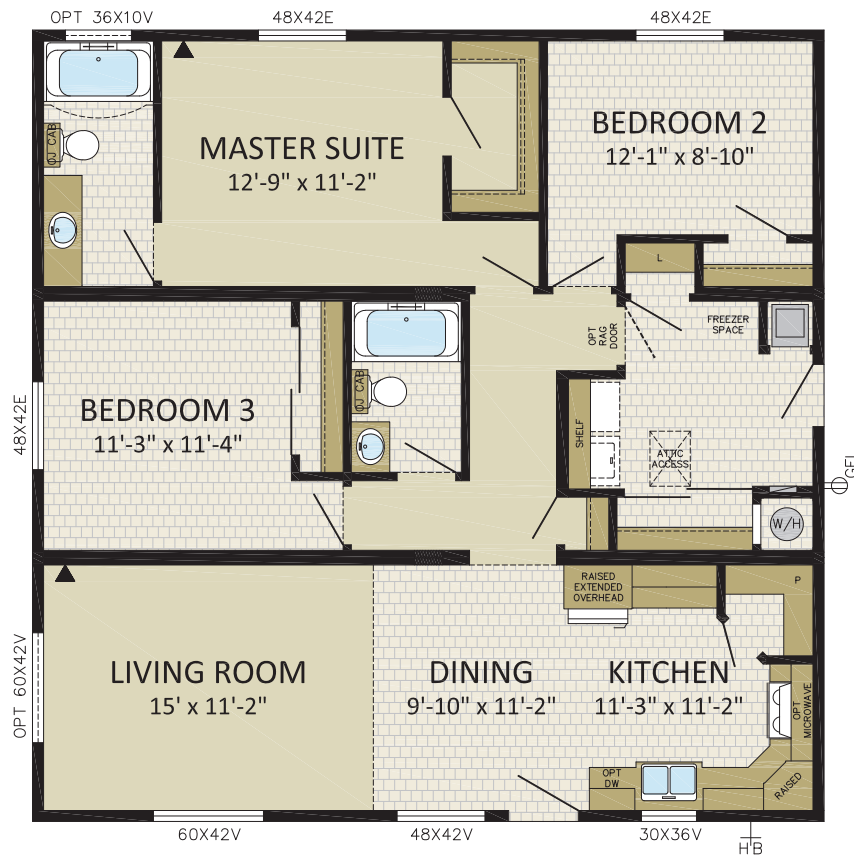


www.modulinepenticton.ca

RUBEN

3 BDRMS, 2 BATHS
40CO3601
 36' x 36' | 1,296 sqft

- IMAGE SHOWN WITH OPTIONS:
- 3/4 STAR LITE FRONT DOOR
 - 48x76v WOLF CREEK WINDOWS IN LR & DR
 - FIBER CEMENT SIDING W/ FAUX STONE
 - 20' DORMER WITH WEB
 - GARAGE BY OTHERS



RADFORD

2 BDRMS, 2 BATHS, DEN
40CO4001
 37' 6" x 36' | 1,452 sqft



Rear View



IMAGES SHOWN WITH OPTIONS:

- LOUISBOURG FRONT DOOR & SIDE LITE
- 60x76V WOLF CREEK WINDOWS IN BEDROOM 2
- FIBER CEMENT SIDING
- 8' COVERED PORCH W/HIP ROOF & PATIO DOORS
- GARAGE BY OTHERS



ROWAN

2 BDRMS, 2 BATHS, COVERED PORCH

40CO4201

36' x 42'/40' | 1,464 sqft

IMAGE SHOWN WITH OPTIONS:

- FRENCH FRONT DOOR W/SIDE LITE
- (3x) 48x60v WINDOWS IN MASTER SUITE & 1 IN BEDROOM 2
- HORIZON FIBER CEMENT PACKAGE
- 30x60e WINDOWS IN BEDROOM2 & MASTER SUITE
- 36x10v BATHROOM WINDOW
- OPTIONAL 6/12 ROOF PITCH WITH 18' DORMER
- GARAGE BY OTHERS



REECE

3 BDRMS, 2 BATHS

40CO4801

40' 6" x 48'/44' | 1,890 sqft

IMAGE SHOWN WITH OPTIONS:

- FRENCH FRONT DOOR
- (2x) 10' GABLES/BOX BAYS W/FIBER CEMENT SHAKES & 60x76V
- WOLF CREEK WINDOWS IN LIVING ROOM & MASTER SUITE
- 60x42V WINDOW IN LIVING ROOM & GATHERING ROOM
- 24x36V BATHROOM WINDOW
- FIBER CEMENT SIDING
- DECK, PERGOLA & HOT TUB BY OTHERS



RAINIER

3 BDRMS, 2 BATHS, COVERED PORCH

40CO4901

39' 8" x 49' | 1,944 sqft

IMAGE SHOWN WITH OPTIONS:

- 3/4 STAR LITE FRONT DOOR W/SIDE LITE
- RIPPLE COVE SIDING PACKAGE
- OPTIONAL 6/12 ROOF PITCH WITH WEB IN GABLE
- OPTIONAL HIP ROOF ILO GABLE FOR PORCH
- GARAGE BY OTHERS



RAMONA

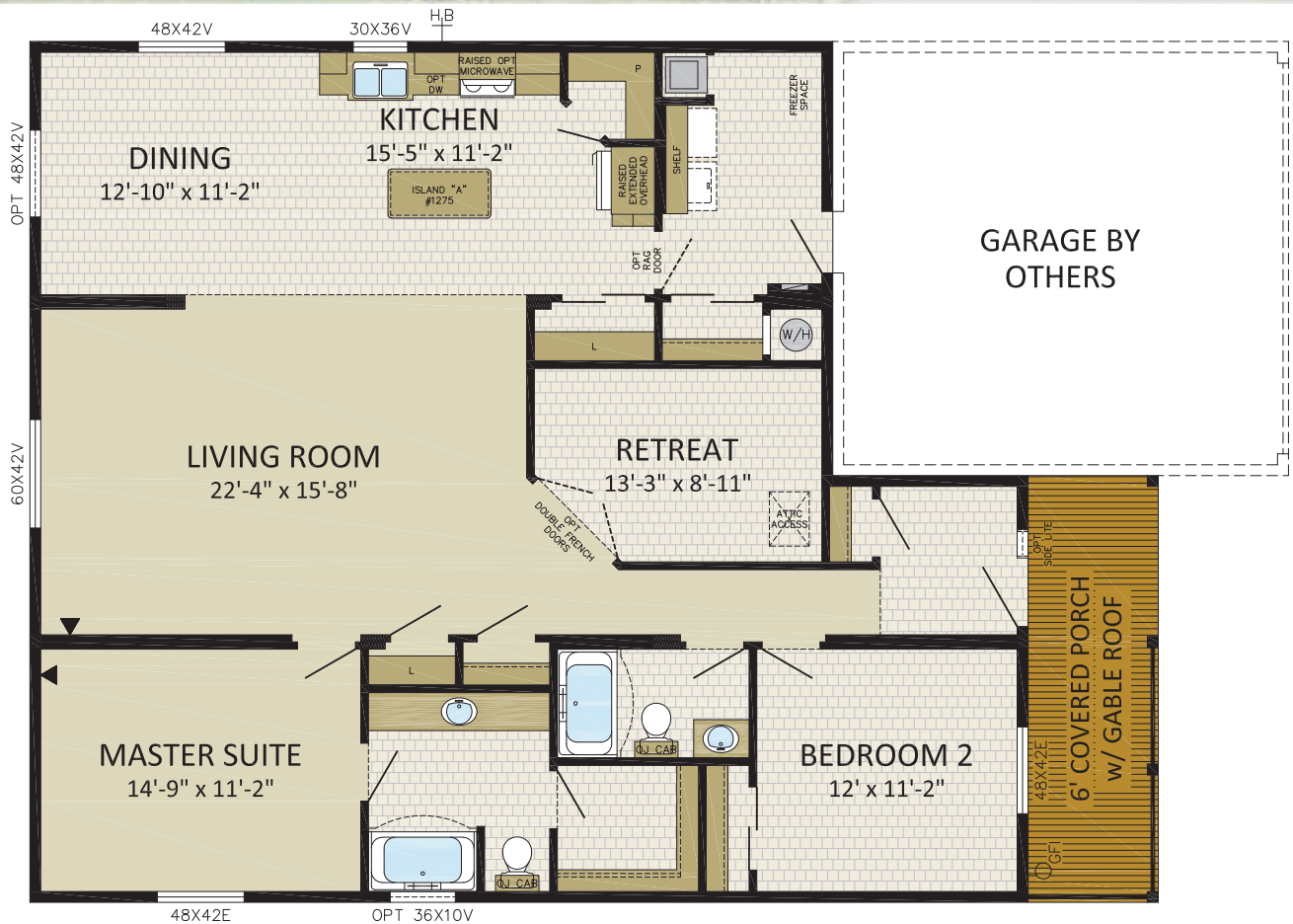
2 BDRMS, 2 BATHS, DEN, COVERED PORCH

40CO5001

39' 8" x 37' 5/2' | 1,763 sqft

IMAGE SHOWN WITH OPTIONS:

- LOUISBOURG FRONT DOOR & SIDE LITES
- 10' BOX BAY W/VERTICAL CORRUGATED METAL SIDING & (2x) 36x60v WINDOWS IN BEDROOM2
- FIBER CEMENT SIDING
- OPTIONAL 5/12 ROOF PITCH
- OPTIONAL HIP ROOF FOR PORCH ILO GABLE
- GARAGE BY OTHERS



REMY

3 BDRMS, 2 BATHS, DEN, COVERED PORCH

40CO5002

39' x 50'/46'/27' | 1,620 sqft

IMAGE SHOWN WITH OPTIONS:

- 3/4 STAR LITE FRONT DOOR & SIDE LITE
- 48x76v WOLF CREEK WINDOWS IN BEDROOM3 & UTILITY ROOM
- 60x42v WINDOW IN LIVING ROOM
- FIBER CEMENT SIDING W/FAUX STONE
- FIBER CEMENT SHAKES IN GABLES



RAMSEY

2 BDRMS, 2 BATHS, DEN, COVERED PORCH

40C05201

39' 8" x 39' / 52' | 1,770 sqft

IMAGE SHOWN WITH OPTIONS:

- FRENCH FRONT DOOR & SIDE LITES
- 60x76v WOLF CREEK WINDOW IN BEDROOM2
- FIBER CEMENT SIDING
- FIBER CEMENT SHAKES IN GABLES & WEBS
- OPTIONAL 6/12 ROOF PITCH
- OPTIONAL HIP ROOF FOR PORCH ILO GABLE
- GARAGE BY OTHERS



REDUCED COSTS

Fewer subcontractors means fewer headaches and reduces your on-site supervision costs, as well as often overlooked costs, such as waste removal and insurance costs.

MODULINE HOMES



**BUILT IN
CANADA**



REDUCED RISK

Modular construction uses the same quality materials as site-built structures, but since 80% of the structure is built and inspected off-site, the amount of time required for on-site construction is dramatically reduced. Less construction on-site reduces the chance of weather delays, material damage and mold contamination. Security issues related to theft are also reduced.

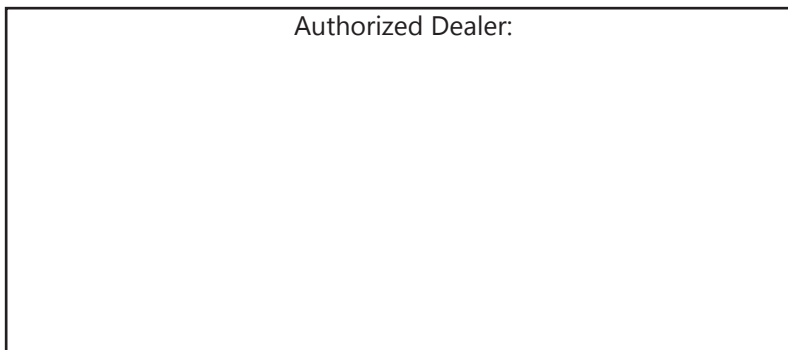
BUILD GREEN

Modular construction earns points from most major Green accrediting agencies for use of recycled materials, tight building envelopes, waste reduction, and innovative building practice.



www.modulinepenticton.ca

Authorized Dealer:




1175 Railway Street
Penticton, BC
V2A 5X5

P:250-493-0122
F:250-493-0133



a proud supporter of
Ronald McDonald House

DISCLAIMER:

Due to continuous product development and improvement, prices, specifications, and materials are subject to change without notice or obligation. Square footage and other dimensions are approximate. Included images are artist renderings and are not intended to be an accurate representation of the home. Renderings and floorplans may be shown with optional features or third-party additions. 7/23