



# Pacific Cabins



Scan on your Mobile Device  
to get your Digital Brochure



[www.modulinepenticton.ca](http://www.modulinepenticton.ca)



# Pacific Cabins

## Standard Features and Specifications Z241 Code

GENERAL CONSTRUCTION	
Built to Code	CSA Z-241
Snowload	70psf/3.35kpa GSL 40psf/1.91pa Design Load
Insulation	Ceiling: R24
	Walls: R22
	Floor: R28
Floor (No Axles)	2x8 16" O.C
Decking	5/8" T&G OSB
Roof Pitch	4/12
Roofing	Architectural Shingle
Eaves	Front 16"
	Side 3"
	Rear 16"
Exterior Walls	8'
	2x6 @ 24" O.C 3/8" OSB Sheathing
Interior Walls	2x4 Vinyl Covered Drywall Panel
Ceiling	Textured Drywall Vault Throughout
Siding	Maintenance Free Vinyl Lap
Fascia	White 8" Smart Trim
Windows	Double Low E, Argon, PVC w/ Vinyl sills. Cordless Cellular Shades (excludes obscured & transoms)
Doors	Patio Door & 36" 2 Panel (select models) Decorative Coach Light at entrances (excluding porch)

SPACIOUS BATHS	
Ceramic Tile Backsplash	
White Framed Vanity Mirror with Bar Light	
One-Piece Fiberglass Tub/Shower with Single Lever Faucet (select models)	
Power Bath Fan on Separate Switch	
GFI Receptacle	
Comfort Height, Dual Flush Toilet	
Shower Rod & Curtain	

UTILITY SERVICES	
Electrical Service	50 AMP with 25' Cord
Heating	96% High Efficiency Propane 2 Stage Furnace with Electronic Ignition
Water Heater	30 Gallon Electric
Communication Outlet	(1) Living Room
Rear Propane Line with Regulator	
Smoke & CO2 Detectors per code	
Heat Tape Plug	
Dehumidistat Control	
Shut Off Valves at all Sinks	
Exterior Frost Free Tap	
Exterior GFI Electrical Outlet	

TASTEFUL INTERIORS	
Flooring	Quality Cushioned Linoleum Throughout
Designer Glass Light Fixtures	
Prefinished Interior Doors	
Decora Switches & Receptacles	
Upgraded Coastal Hemlock Trim Throughout	
(2) Chrome Double Coat Hooks	
Primary BDR: Nightstands w/ Receptacles & Single Overhead Cabinet & Wardrobe (select models)	

BRIGHT, BEAUTIFUL KITCHENS	
European Deluxe Cabinetry with Crown Molding	
Range & Fridge Cabinets (select models)	
Fridge Opening 36"x72" (select models)	
Ceramic Tile Backsplash	
Double Stainless Steel Kitchen Sink (select models)	
Chrome Single Handle Pull Out Faucet	
24x36V Window over Kitchen Sink (select models)	
Exterior Vented Range Hood with Light (select models)	
18 cu ft, 2 Door Frost Free Refrigerator (select models)	
Select Models- Prep for Bar Fridge Only	
30" Propane Range (select models)	

2023.1

Proud To Be  
**CANADIAN!**





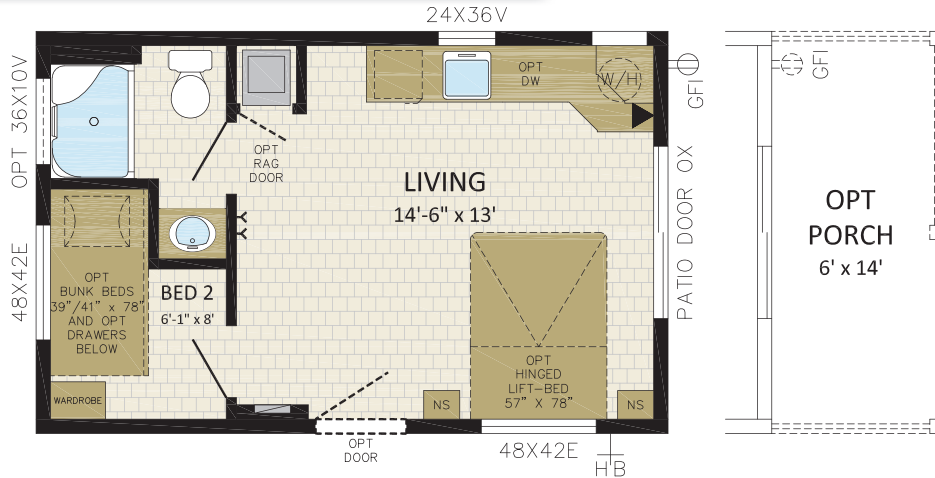


# Garibaldi

14'X 22' | 308 SQFT | 14712  
 1 BDRM/STUDIO | 1 BATH | FRONT LR

IMAGE SHOWN WITH OPTIONS:

- OPTIONAL 6'X14' PORCH
- OPTIONAL EXTERIOR DOOR
- FIBER CEMENT SIDING

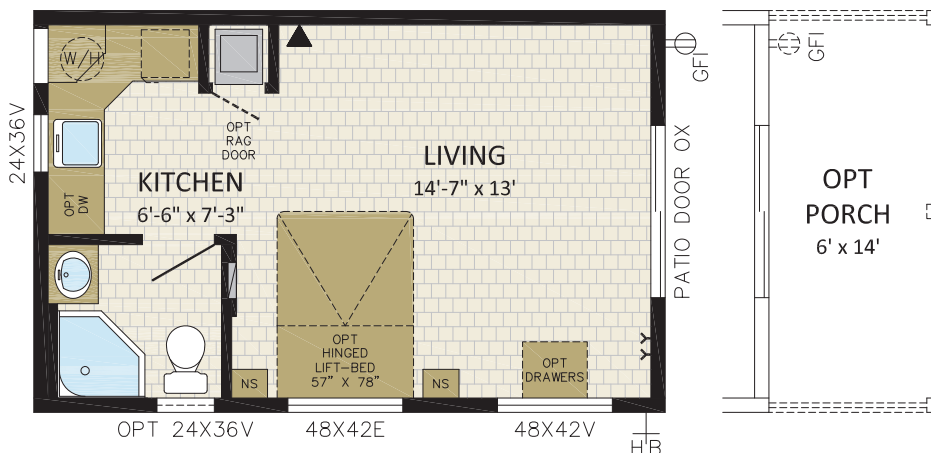


# Elkhorn

14'X 22' | 308 SQFT | 14722  
 STUDIO | 1 BATH | FRONT LR

IMAGE SHOWN WITH OPTIONS:

- OPTIONAL 6'X14' PORCH
- OPTIONAL 24X36V WINDOW
- FIBER CEMENT SIDING

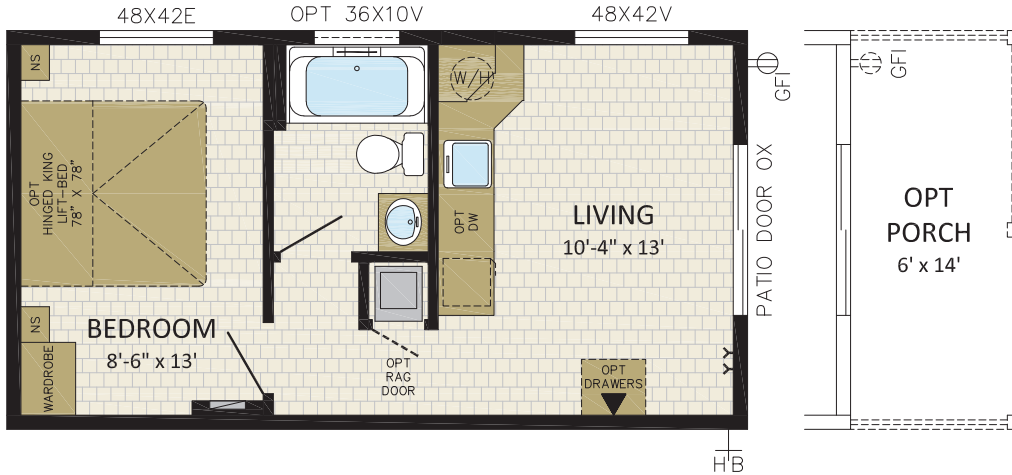


# Baker

14'X 26' | 364 SQFT | 14726  
STUDIO | 1 BATH | FRONT LR

IMAGE SHOWN WITH OPTIONS:

- OPTIONAL 6'X14' PORCH
- OPTIONAL 36X10V WINDOW

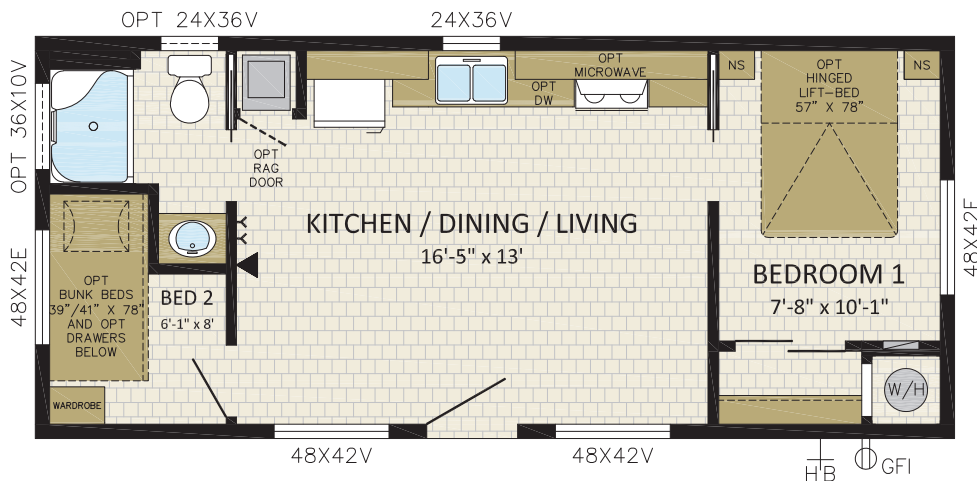


# Robson

14'X 32' | 448 SQFT | 14732  
2 BDRM | 1 BATH | FRONT BDRM

IMAGE SHOWN WITH OPTIONS:

- OPTIONAL 12' DORMER
- OPTIONAL 8' BOX BAY W/HIP ROOF & FAUX STONE
- 9-LITE DOOR
- FIBER CEMENT SIDING





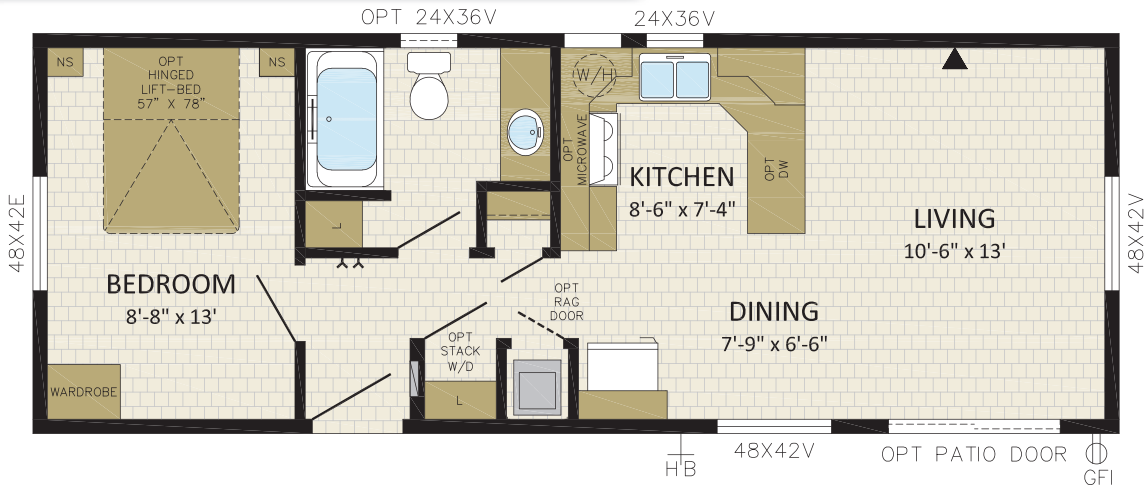


# Blackcomb

14'X 38' | 532 SQFT | 14736  
1 BDRM | 1 BATH | FRONT LR

IMAGE SHOWN WITH OPTIONS:

- OPTIONAL 12' DORMER
- 9-LITE DOOR
- DECK BY OTHERS
- FIBER CEMENT SIDING
- OPTIONAL PATIO DOOR

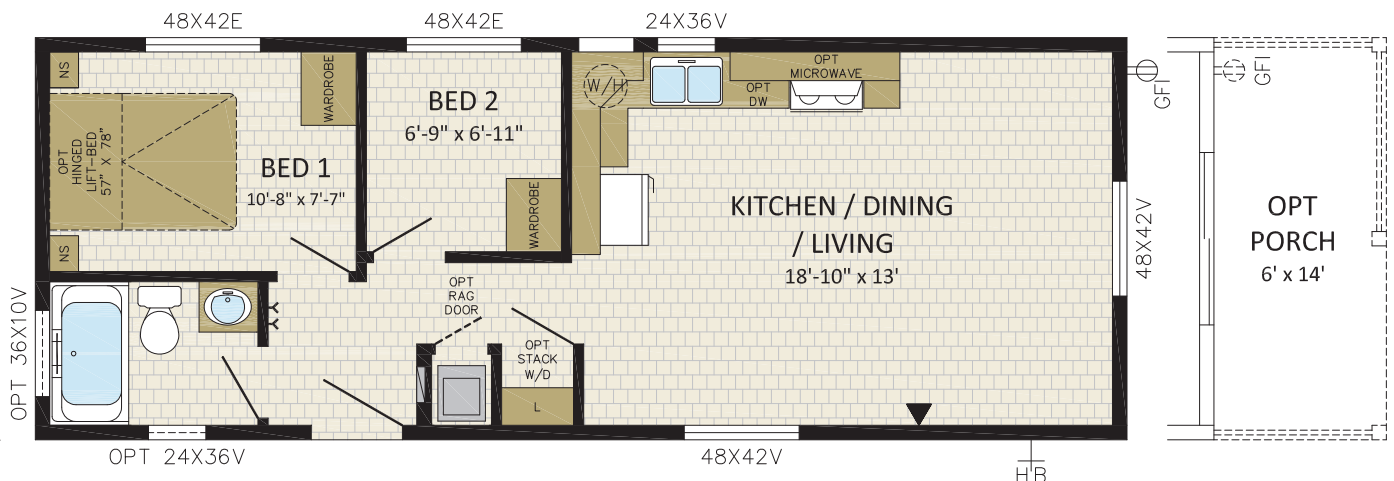


# Cascade

14'X 38' | 532 SQFT | 14737  
2 BDRM | 1 BATH | FRONT LR

IMAGE SHOWN WITH OPTIONS:

- OPTIONAL 12' DORMER
- OPTIONAL 24X36V WINDOW
- OPTIONAL 6'X14' PORCH W/ 9-LITE DOOR & CEMENT SHAKES
- OPTIONAL SMART BOARD AROUND WINDOWS & CORNERS



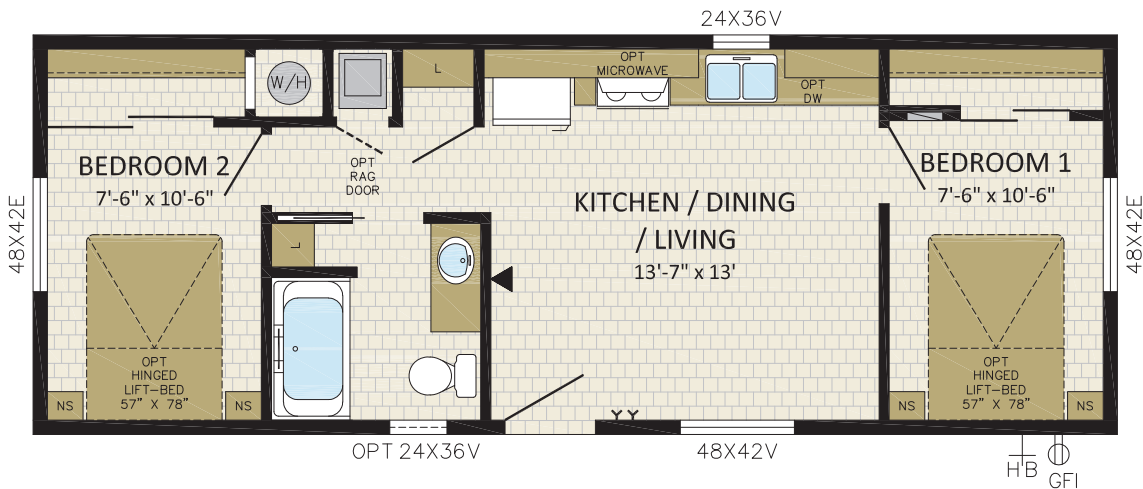


# Kootenay

14'X 38' | 532 SQFT | 14738  
 2 BDRM | 1 BATH | FRONT BDRM

IMAGE SHOWN WITH OPTIONS:

- OPTIONAL 12' DORMER W/ CEMENT SHAKES & 9-LITE DOOR
- OPTIONAL 24X36V WINDOW
- OPTIONAL 8' BOX BAY W/FAUXSTONE
- OPTIONAL SMART BOARD AROUND WINDOWS & CORNERS



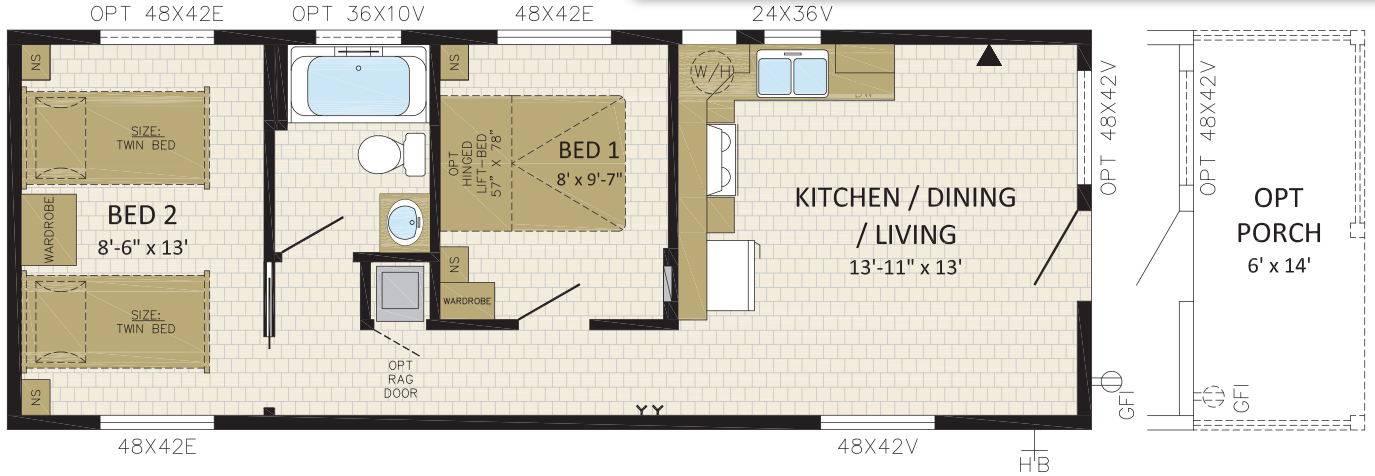


# Manning

14'X 38' | 532 SQFT | 14740  
 2 BDRM | 1 BATH | FRONT LR/KIT

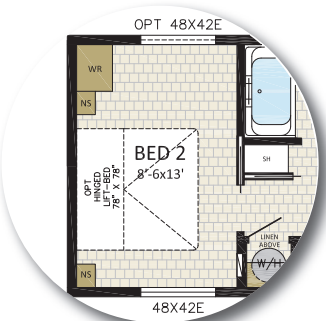
IMAGE SHOWN WITH OPTIONS:

- OPTIONAL 6'X14' PORCH W/9-LITE DOOR & 48X42V WINDOW
- OPTIONAL SMART BOARD AROUND WINDOWS & CORNERS



# Fairmont

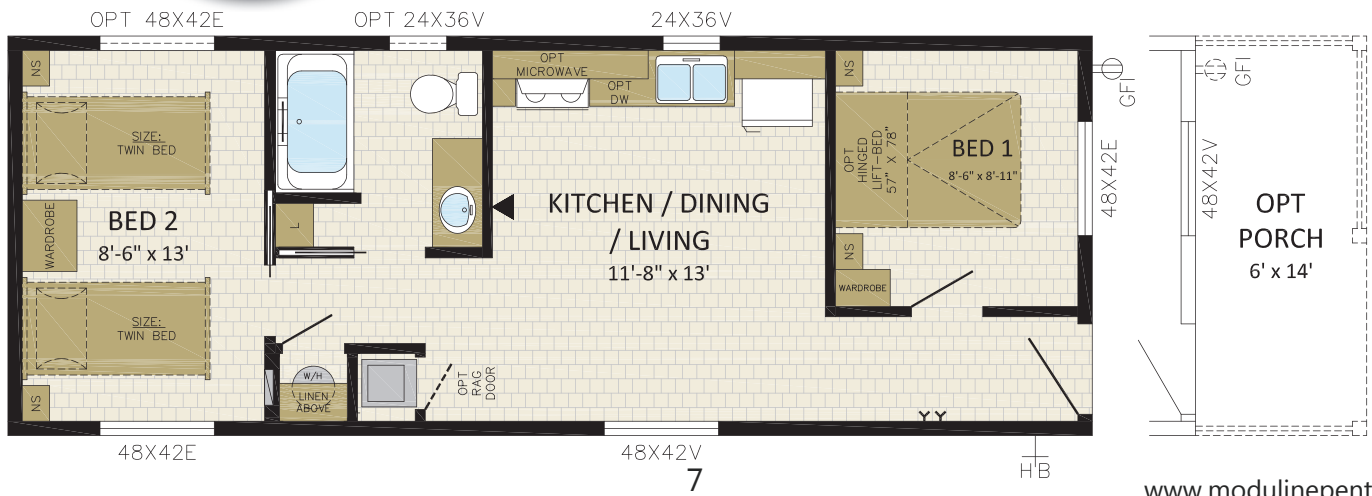
14'X 38' | 532 SQFT | 14741  
 2 BDRM | 1 BATH | FRONT BDRM



Optional Bed 2

IMAGE SHOWN WITH OPTIONS:

- OPTIONAL 6'X14' PORCH W/9-LITE DOOR
- OPTIONAL SMART BOARD AROUND WINDOWS & CORNERS







[www.modulinepenticton.ca](http://www.modulinepenticton.ca)



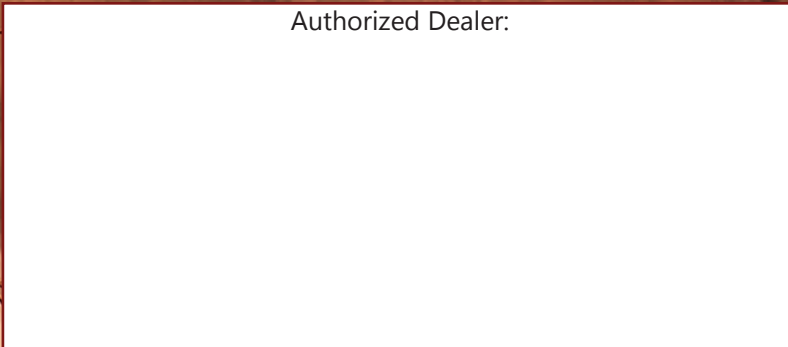
a proud supporter of  
Ronald McDonald House

1175 Railway Street  
Penticton, BC  
V2A 5X5

P:250-493-0122  
F:250-493-0133

2500/3/22

Authorized Dealer:



**DISCLAIMER:**

Due to continuous product development and improvement, prices, specifications, and materials are subject to change without notice or obligation. Square footage and other dimensions are approximate. Included images are artist renderings and are not intended to be an accurate representation of the home. Renderings and floorplans may be shown with optional features or third-party additions. 7/23